

VÝŠKOVÝ SYSTÉM Bpv SOUŘADNICOVÝ SYSTÉM S-JTSK

Číslo změny:	Obsah změny:	Datum změny:
01	-	-
02	-	-
03	-	-

Objednatel:



SZDC, s.o.
Dlážděná 1003/7, 110 00 Praha 1
tel.: +420 222 335 777
e-mail: szdc@szdc.cz

Generální projektant:



SUDOP PRAHA a.s.
Olšanská 1a, 130 80 Praha 3
tel.: +420 267 094 111
fax: +420 224 230 316
e-mail: praha@sudop.cz

Hlavní inženýr projektu:

ING. MARTIN RAIBR

Garant profese:

ZDENĚK PACHOLÍK

Středisko:

ELEKTROTECHNIKY, TRAKCE, SDĚLOVACÍ A ZABEZPEČOVACÍ TECHNIKY

Vedoucí střediska:

ING. MARTIN RAIBR

Odpovědný projektant SO, IO, PS:

ING. MARTIN RAIBR

Vypracoval:

ŠTĚPÁNKA ŠÍCHOVÁ

Kontroloval:

ING. MARTIN RAIBR

Název akce:

Úpravy zabezpečovacího zařízení pro ETCS včetně DOZ v úseku Roudnice nad Labem - st. hr. SRN

Číslo smlouvy:

15 070 208

Projektový stupeň:

PD

Část:

SITUACE STAVBY
KOORDINAČNÍ SITUACE STAVBY, 1. ČÁST

Datum:

30.06.2016

Číslo části:

C.2.3

Název přílohy:

**PŘECHODY PŘES MOSTY A PROPUSTKY
PRACKOVICE N. L. - ÚSTÍ NAD LABEM**

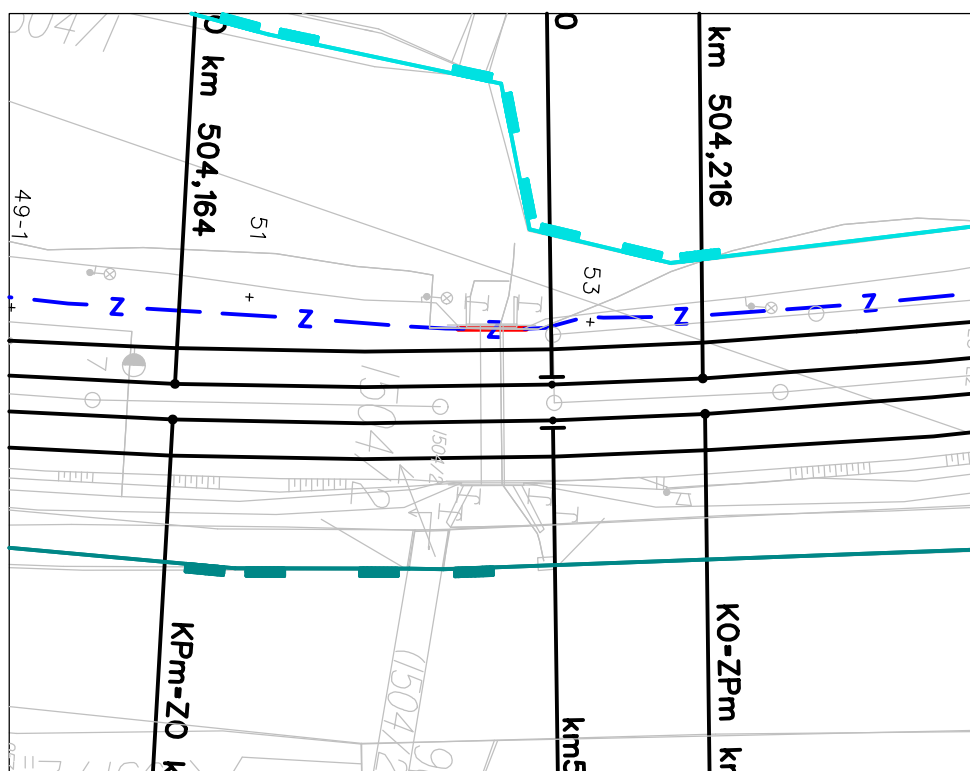
Měřítko:

Počet formátů:

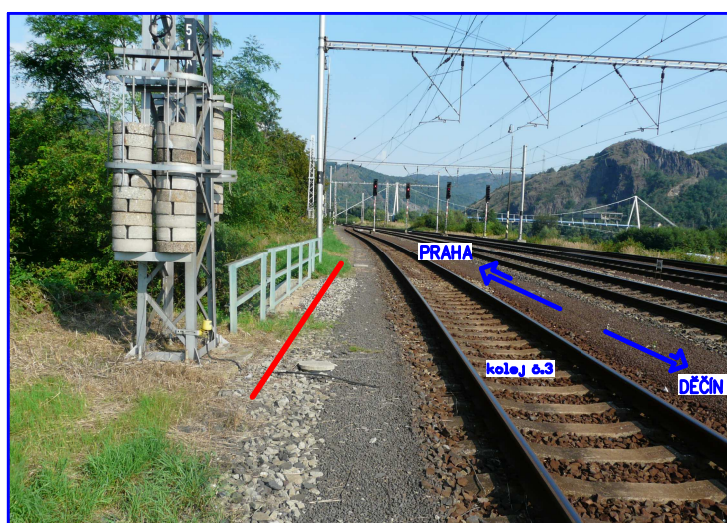
A4

Číslo přílohy:

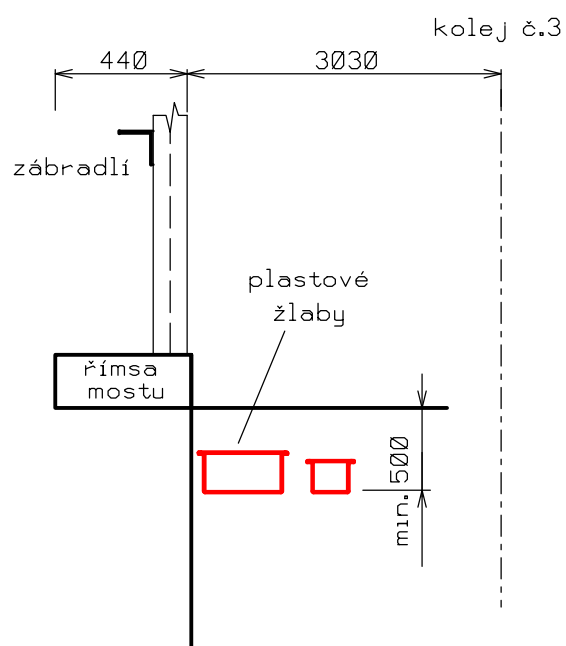
0104



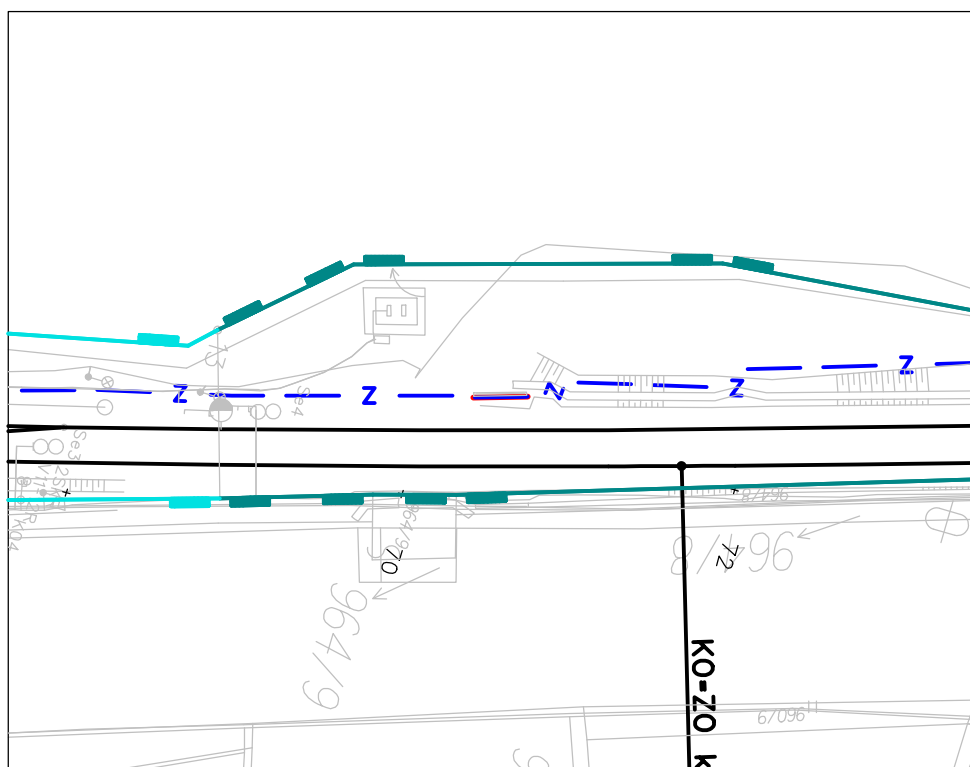
most km 504,185



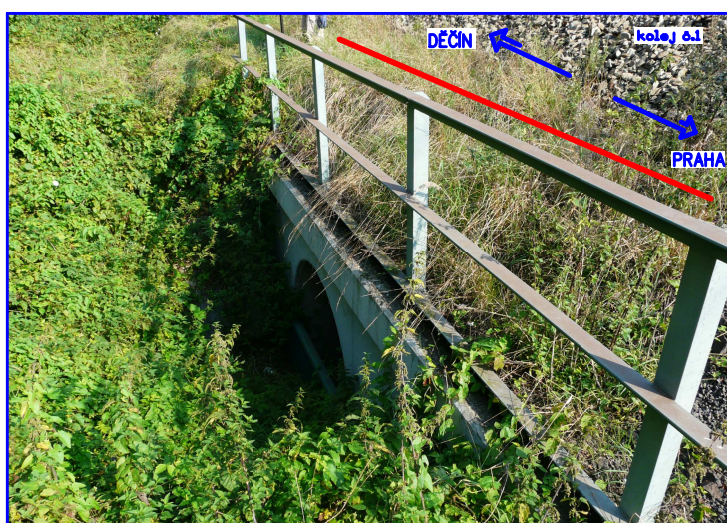
obrázek č.95



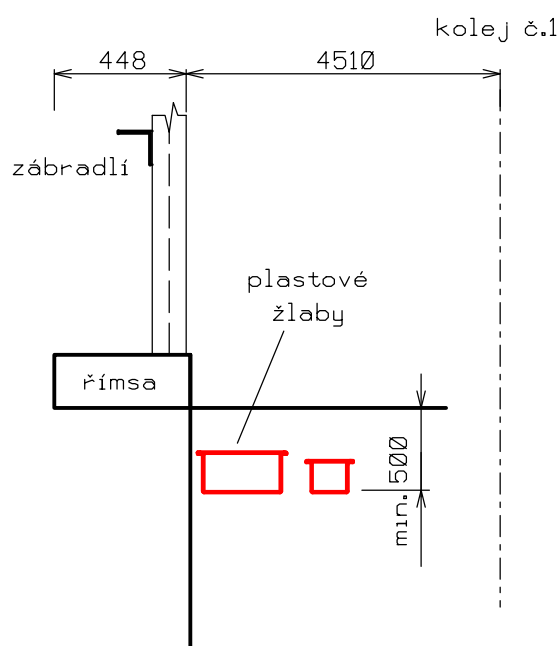
— Navrhovaná kabelová trasa mezi
římou mostu a kolejíštěm



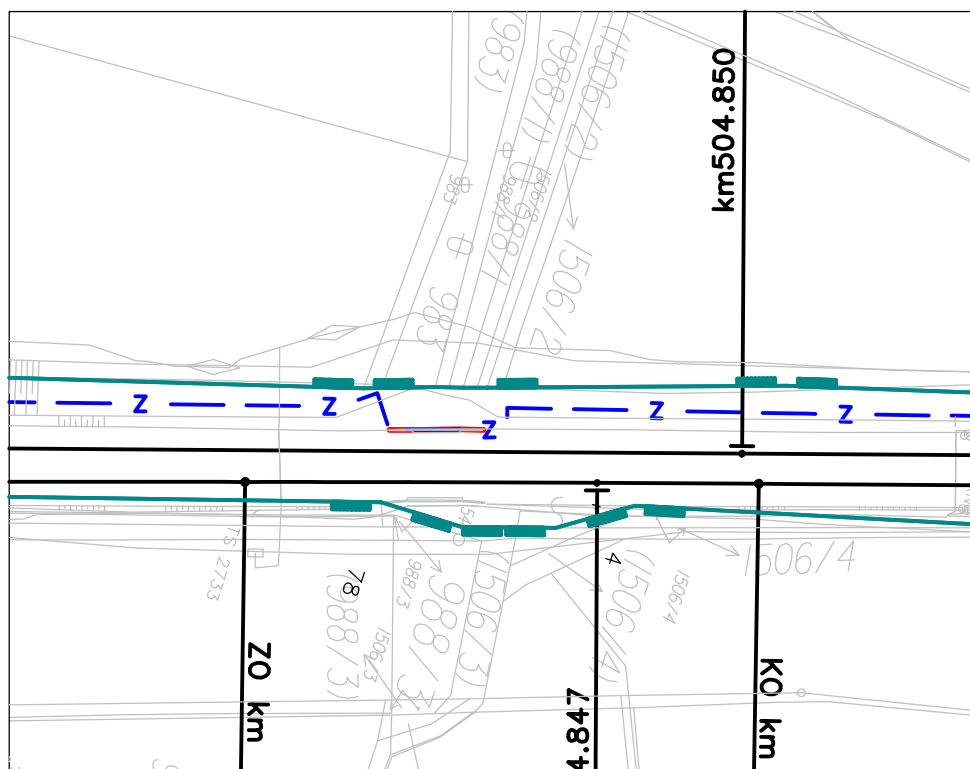
propustek km 504,607



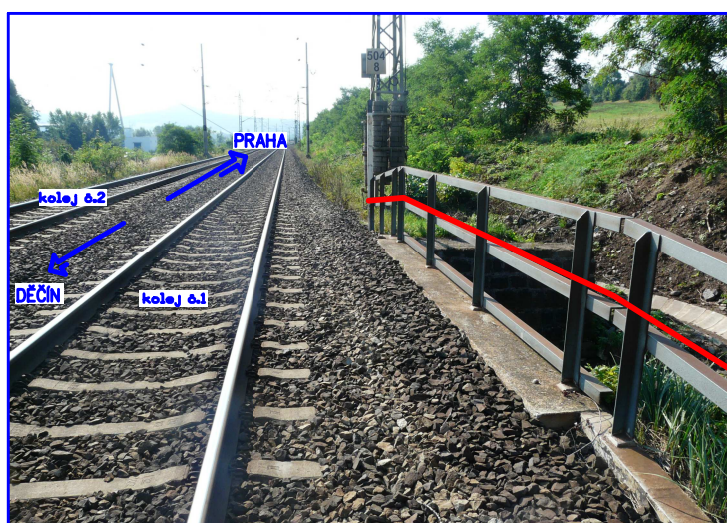
obrázek č.96



— Navrhovaná kabelová trasa mezi
římšou propustku a kolejištěm

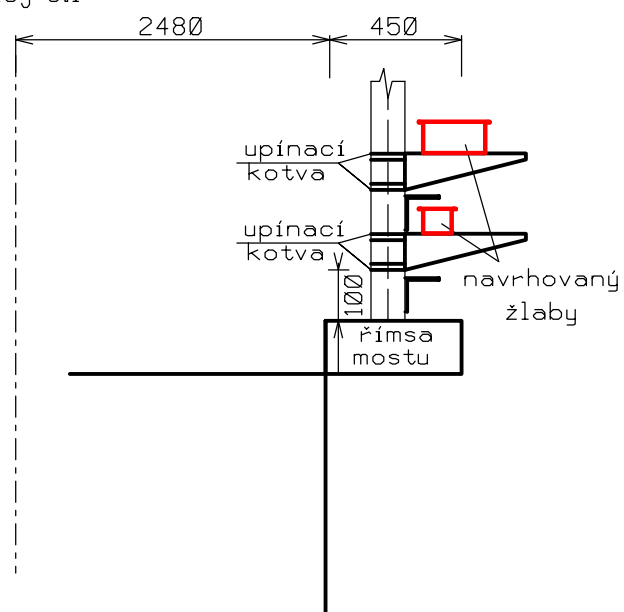


most km 504,823

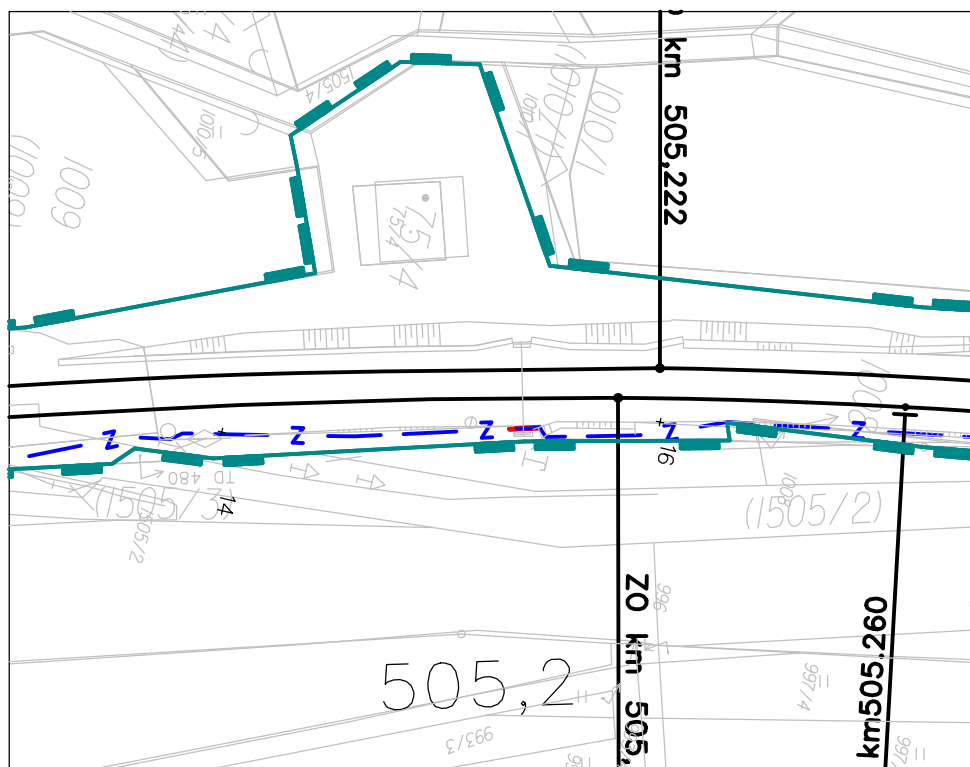


obrázek č.97

kolej č.1



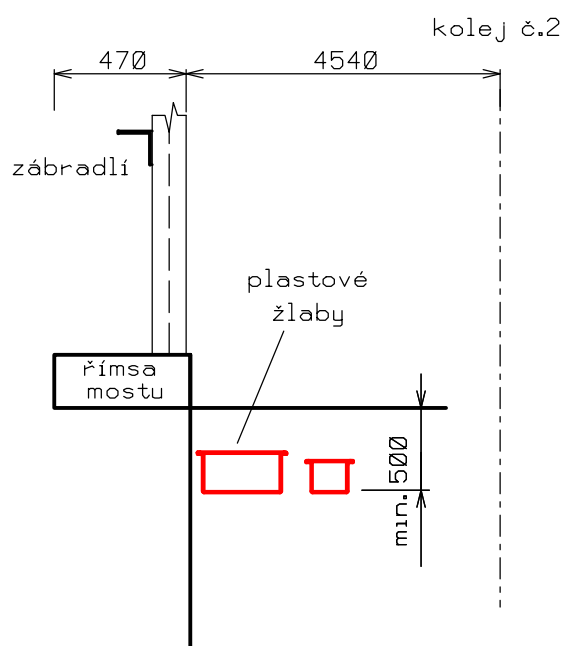
— Navrhovaná kabelová trasa podél zábradlí



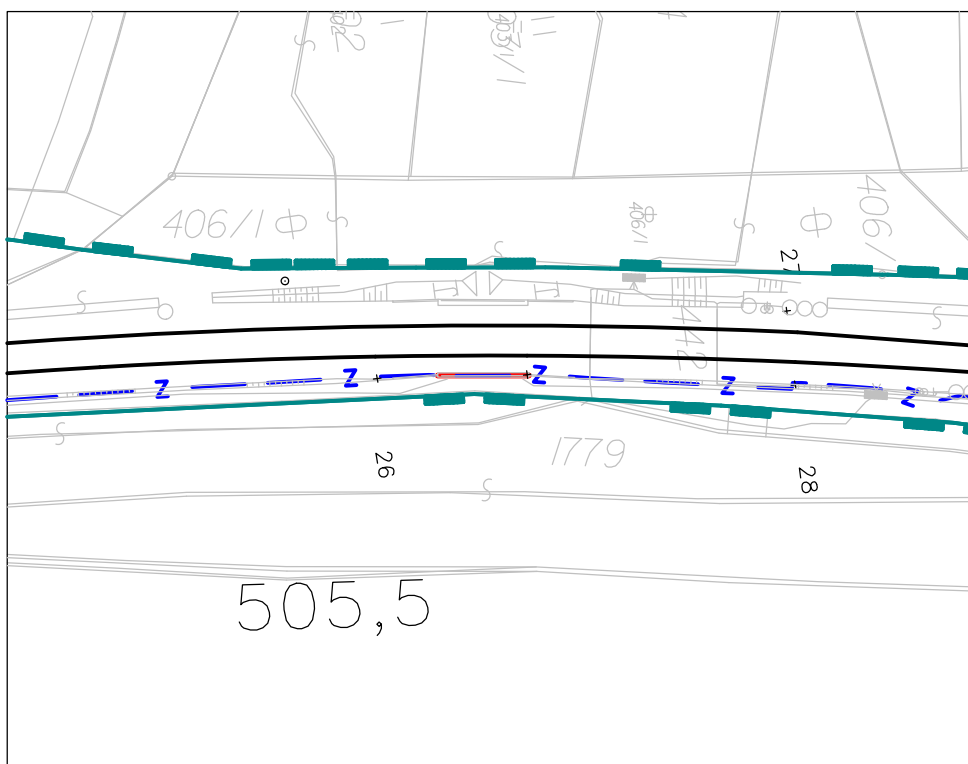
propustek km 505,206



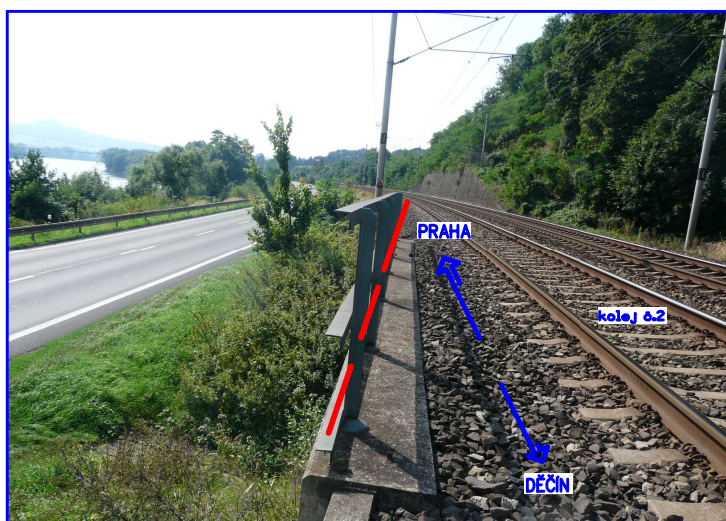
obrázek č.98



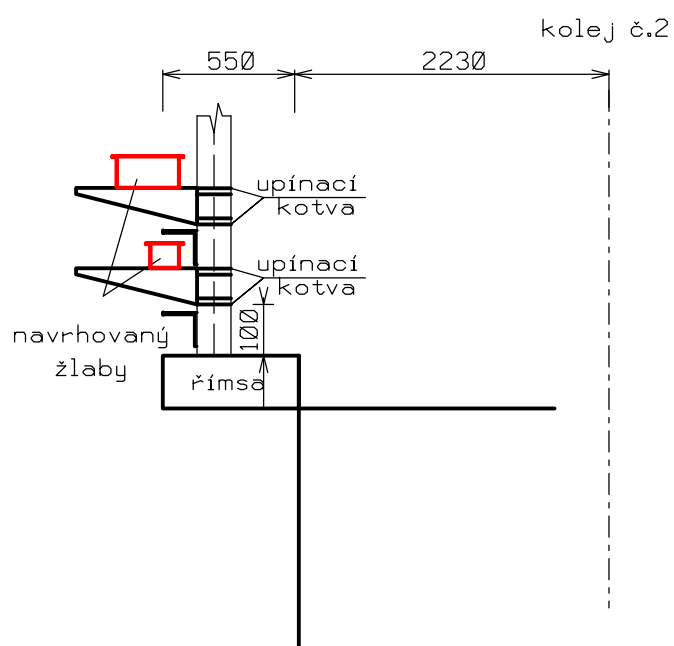
— Navrhovaná kabelová trasa mezi římsou propustku a kolejí



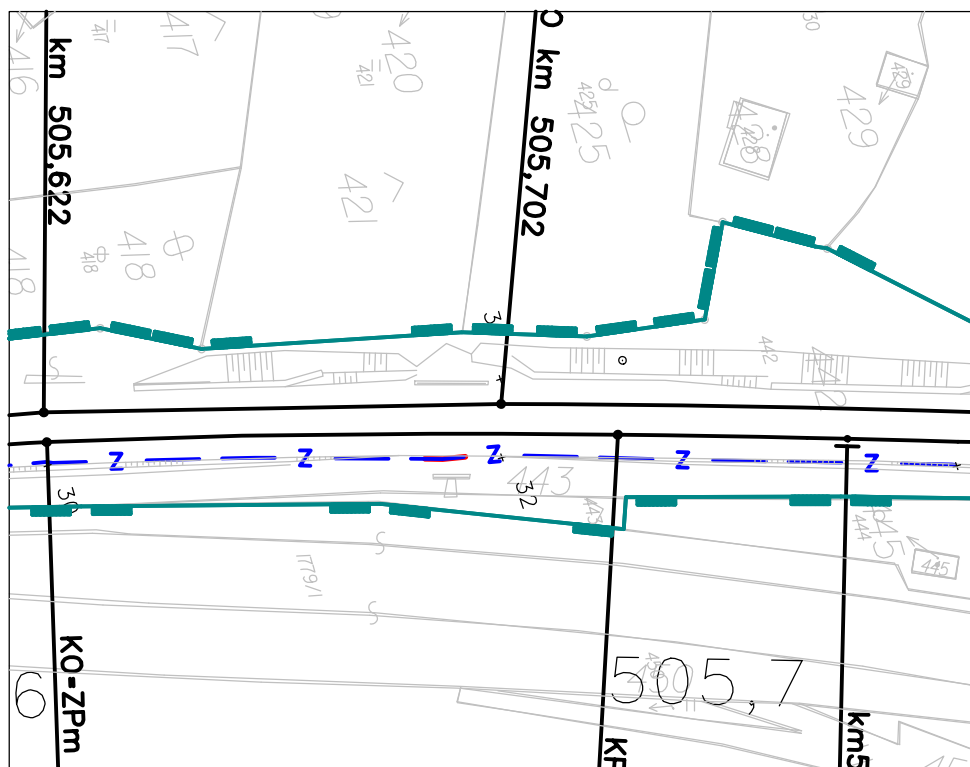
propustek km 505,519



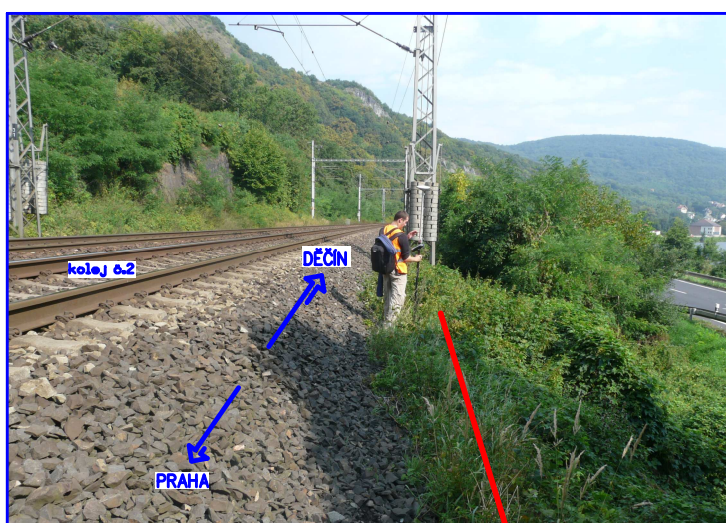
obrázek č.99



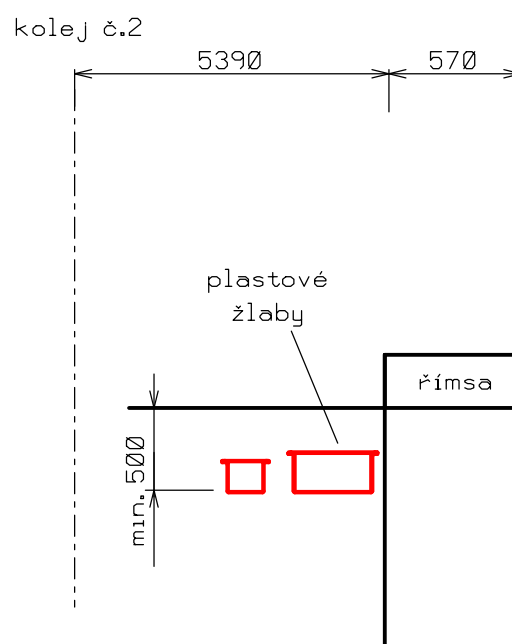
— Navrhovaná kabelová trasa podél zábradlí



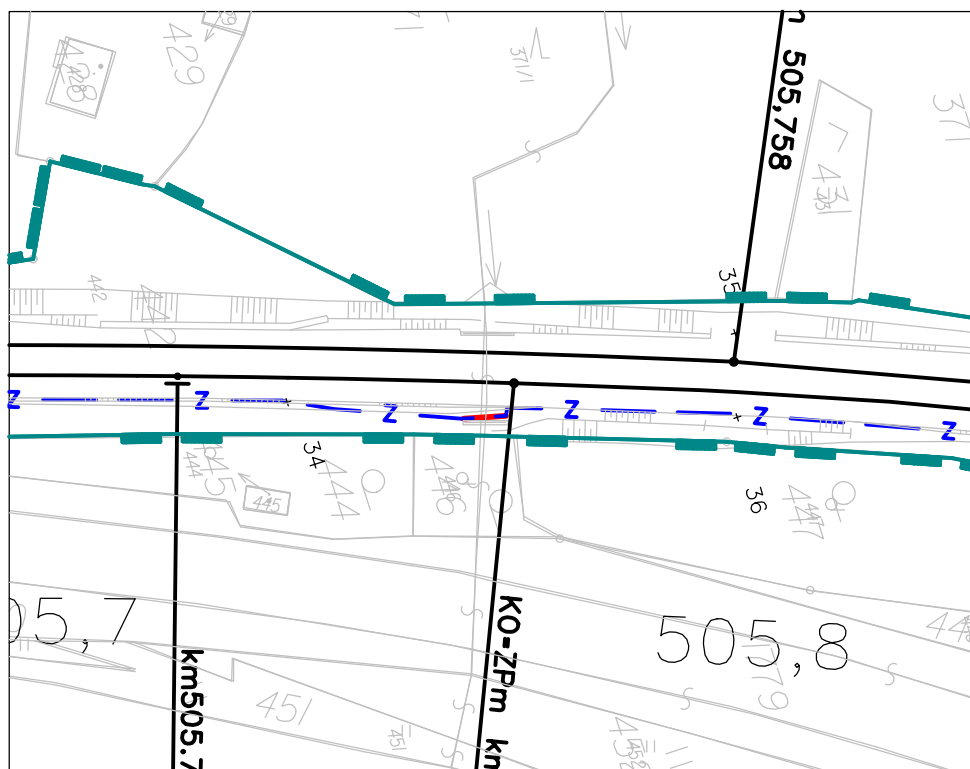
propustek km 505,670



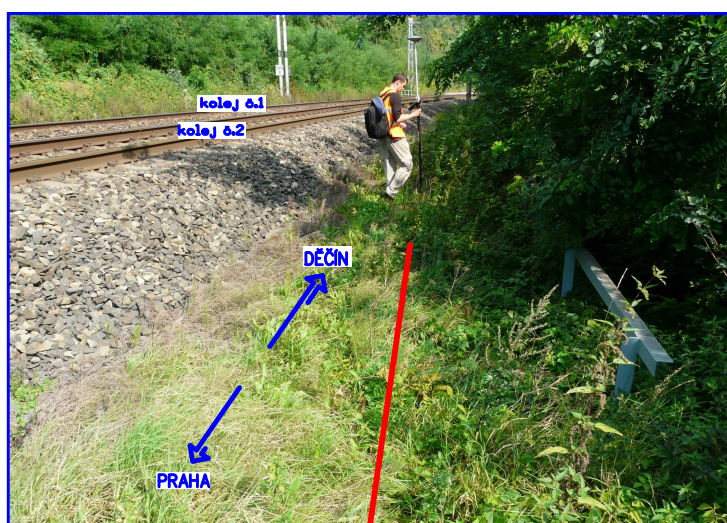
obrázek č.100



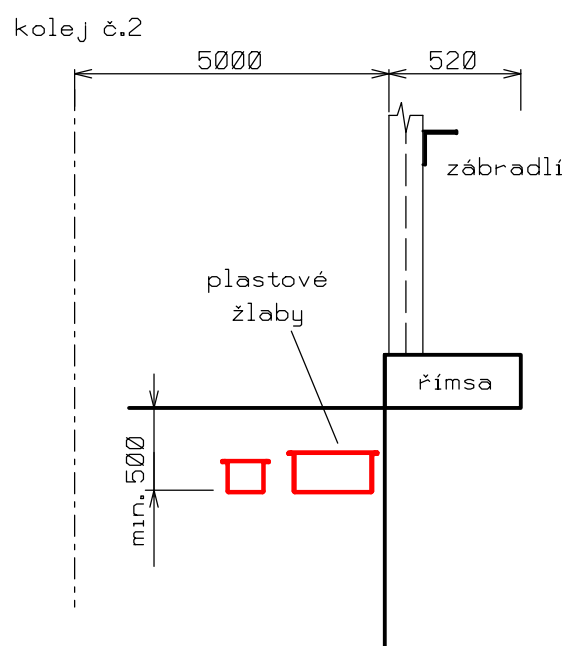
— Navrhovaná kabelová trasa mezi římsou propustku a kolejíštěm



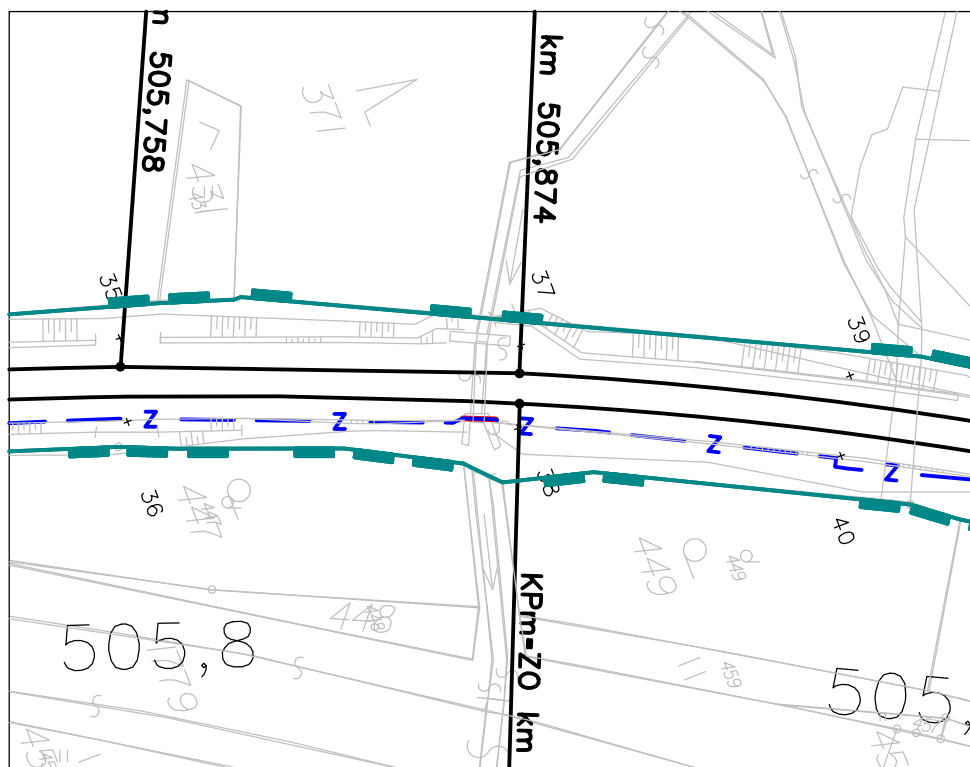
propustek km 505,764



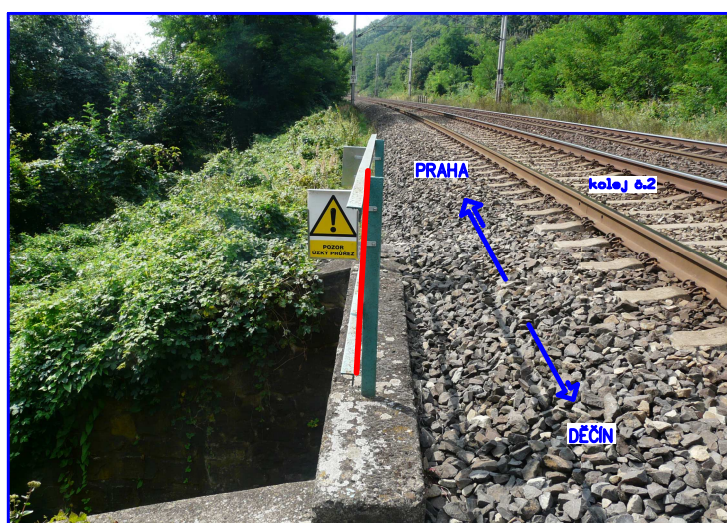
obrázek č.101



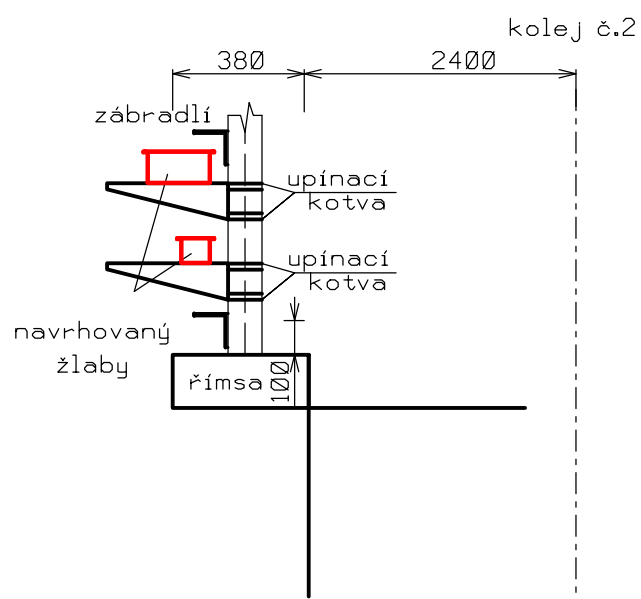
— Navrhovaná kabelová trasa mezi římšou propustky a kolejíštěm



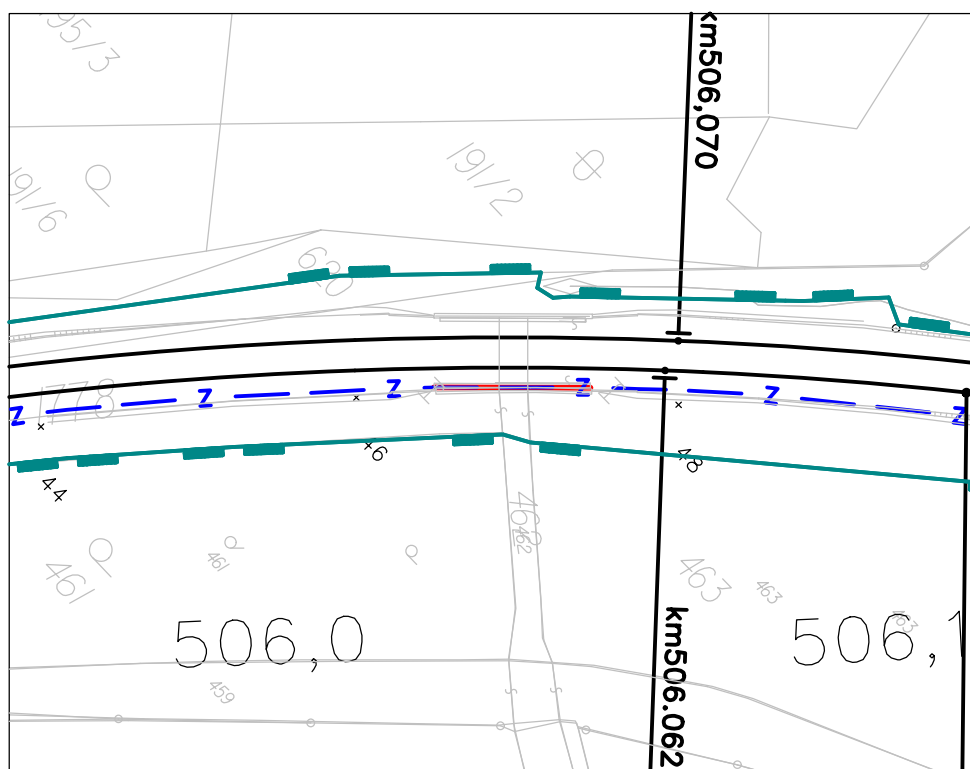
propustek km 505,844



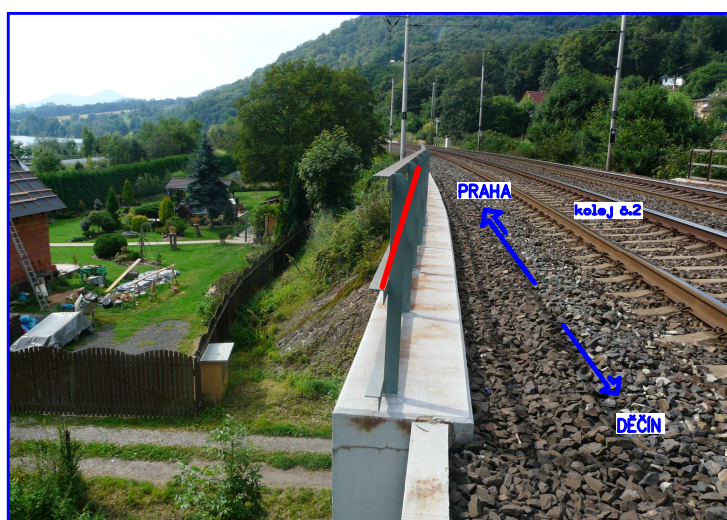
obrázek č.102



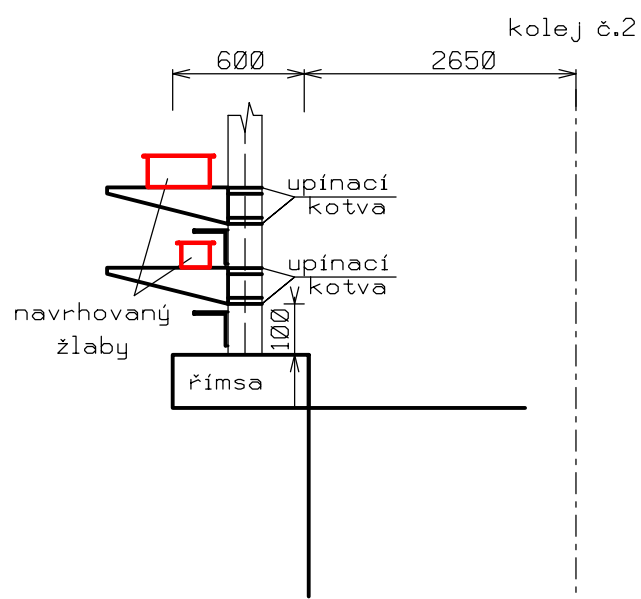
— Navrhovaná kabelová trasa podél zábradlí



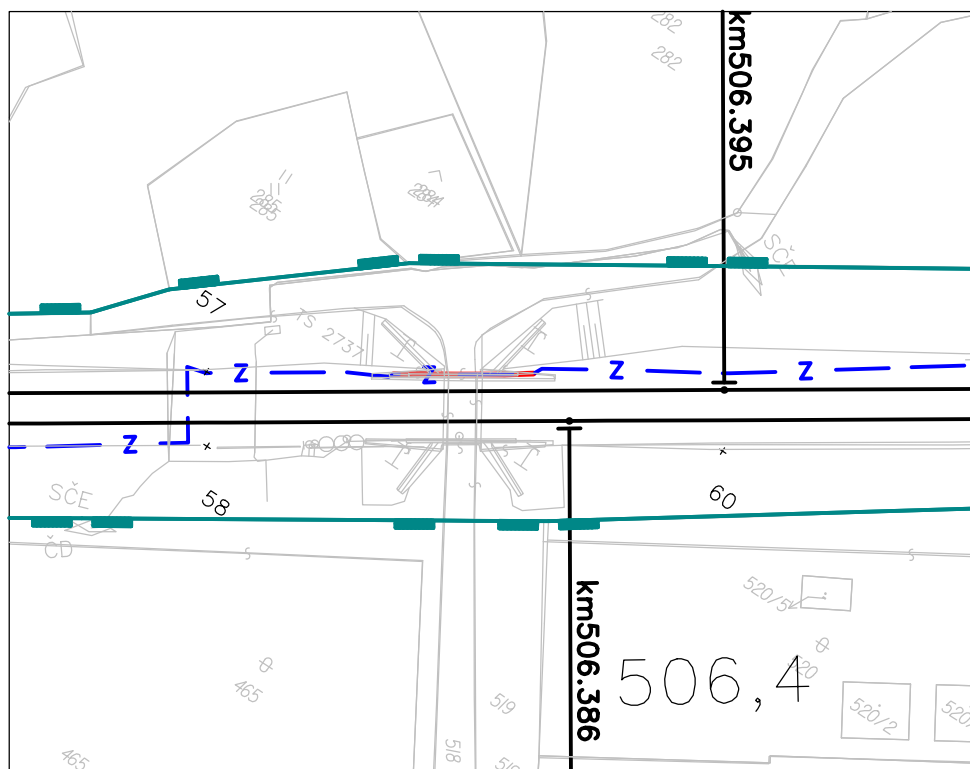
most km 506,042



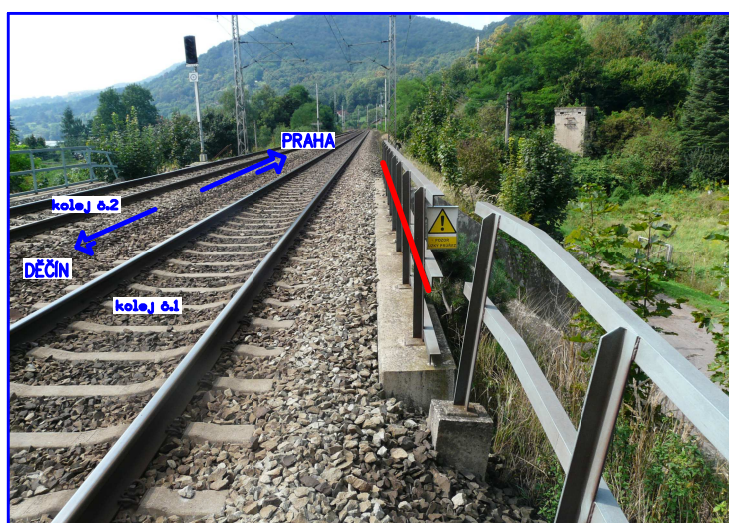
obrázek č.103



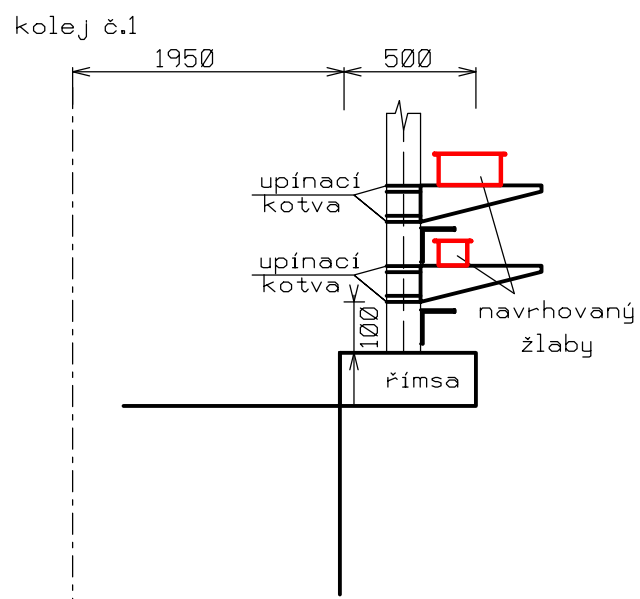
— Navrhovaná kabelová trasa podél zábradlí



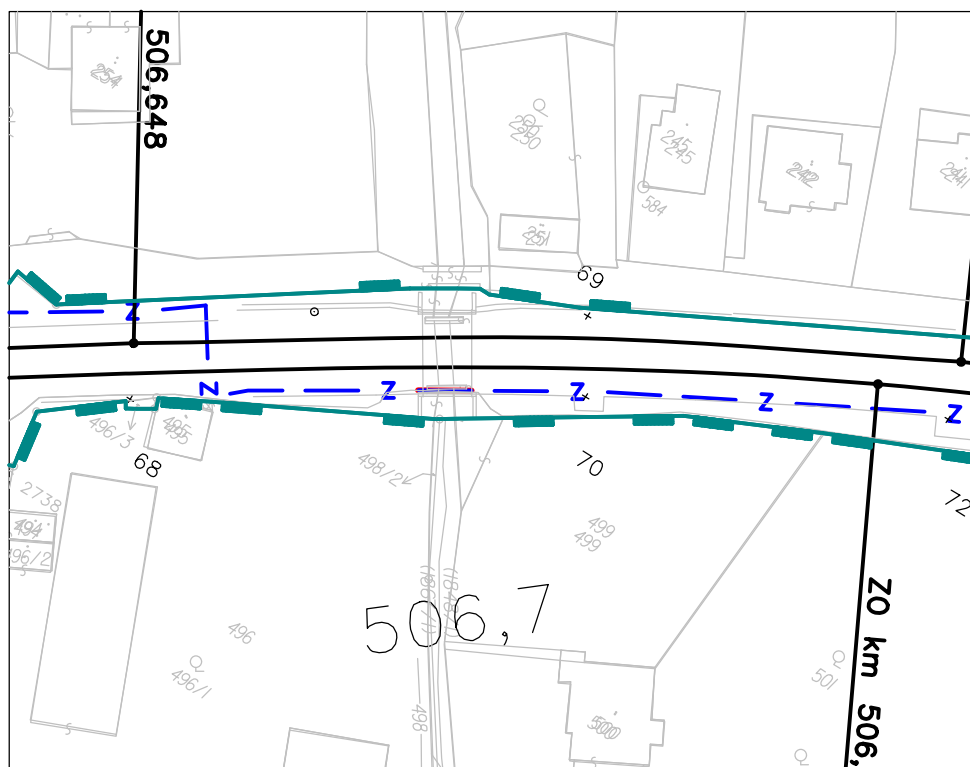
most km 506,372



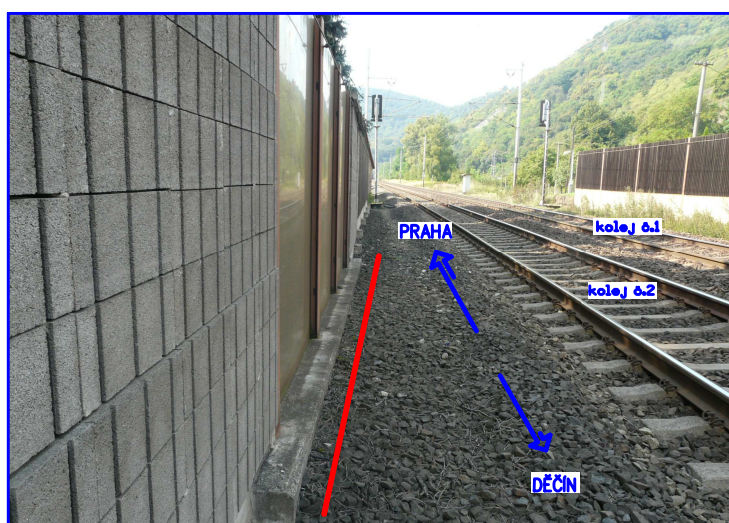
obrázek č.104



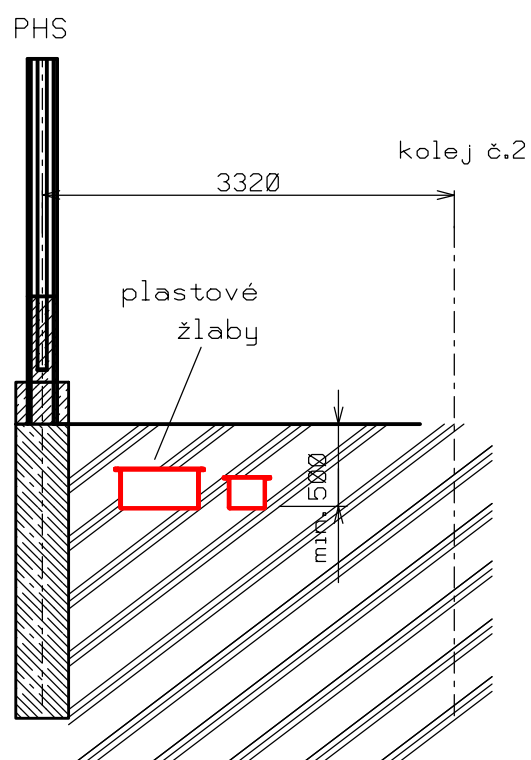
— Navrhovaná kabelová trasa podél zábradlí



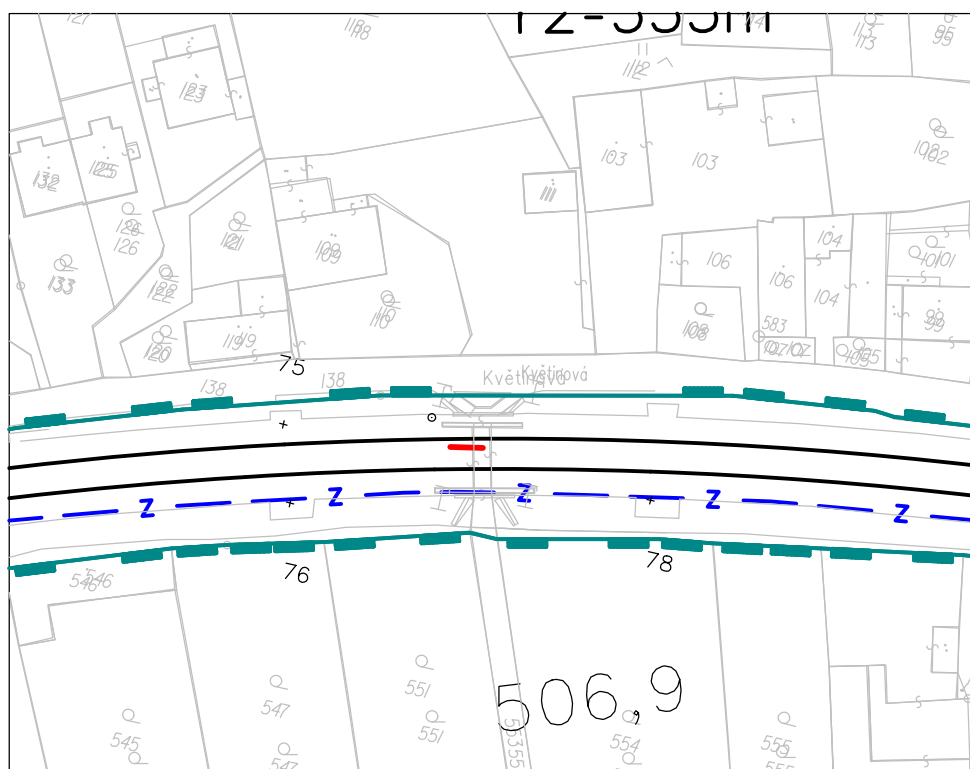
most km 506,709



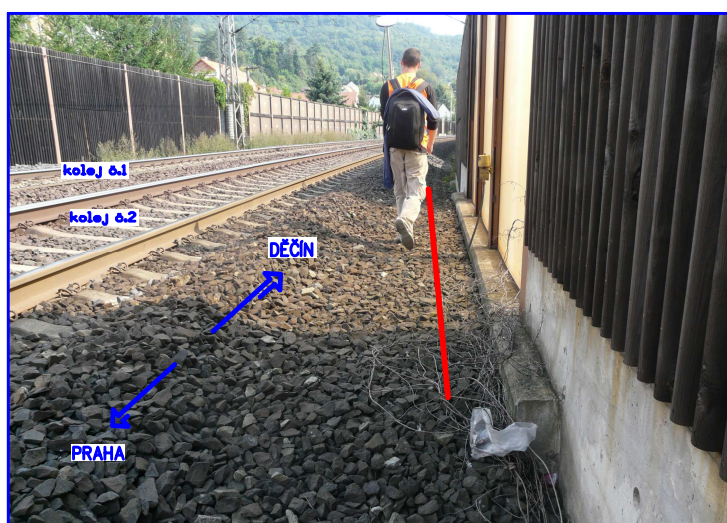
obrázek č.105



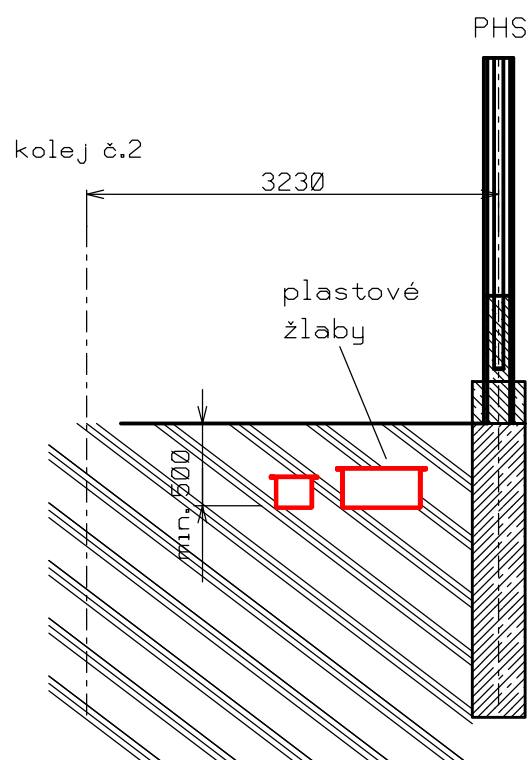
— Navrhovaná kabelová trasa podél PHS



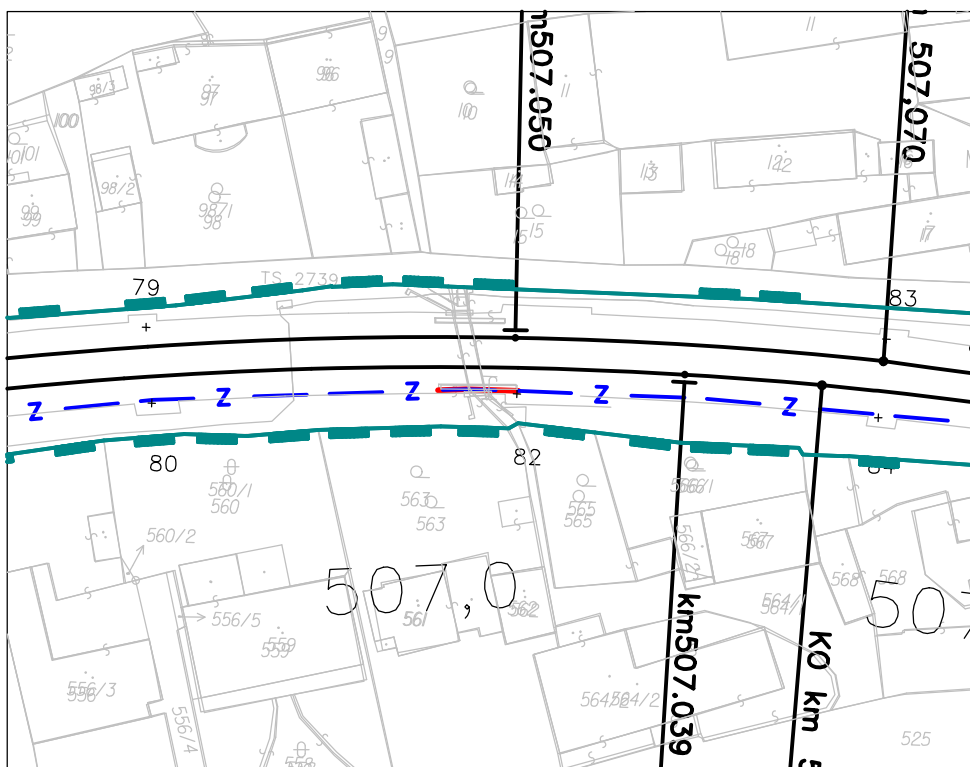
most km 506,896



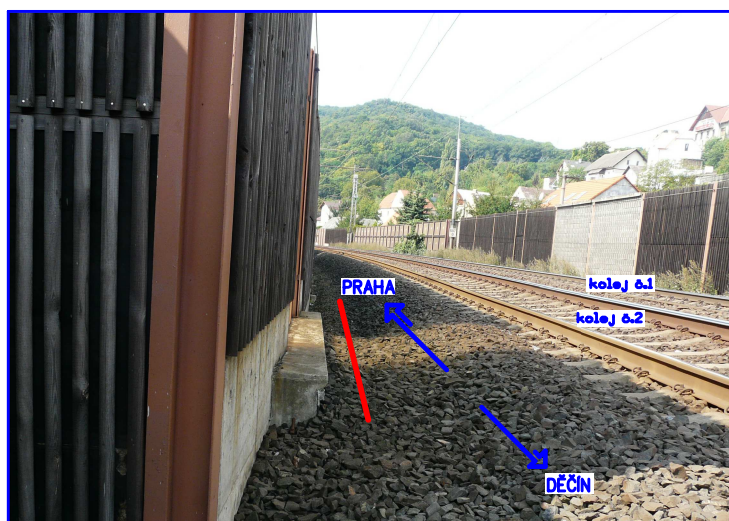
obrázek č.106



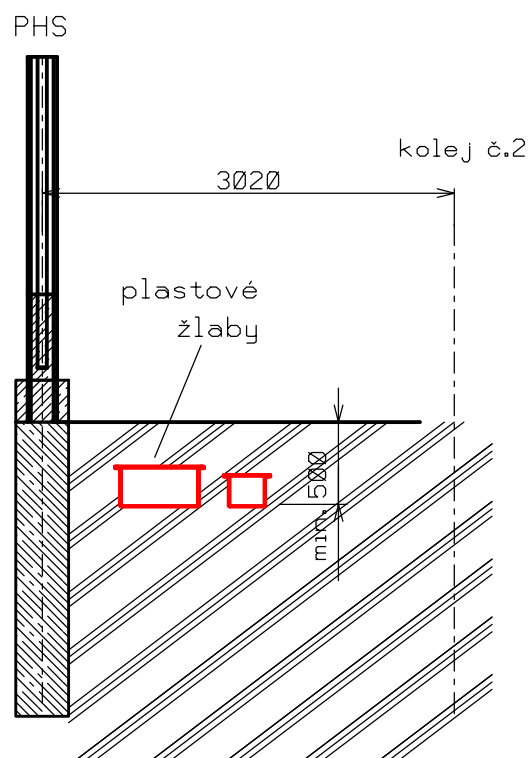
— Navrhovaná kabelová trasa podél PHS



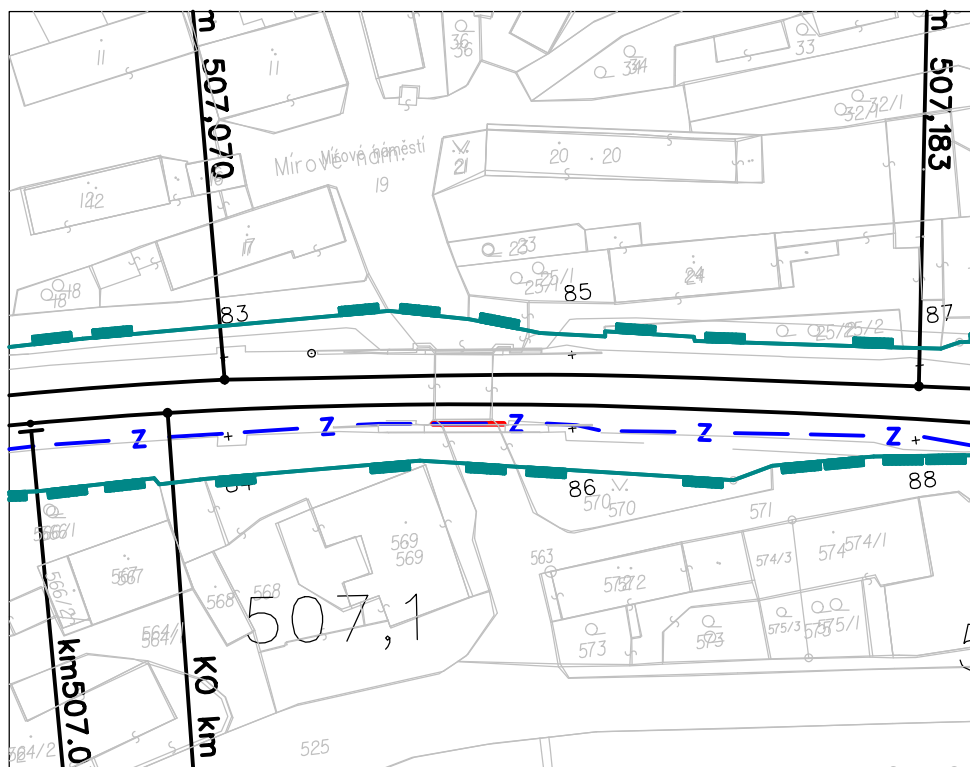
propustek km 507,010



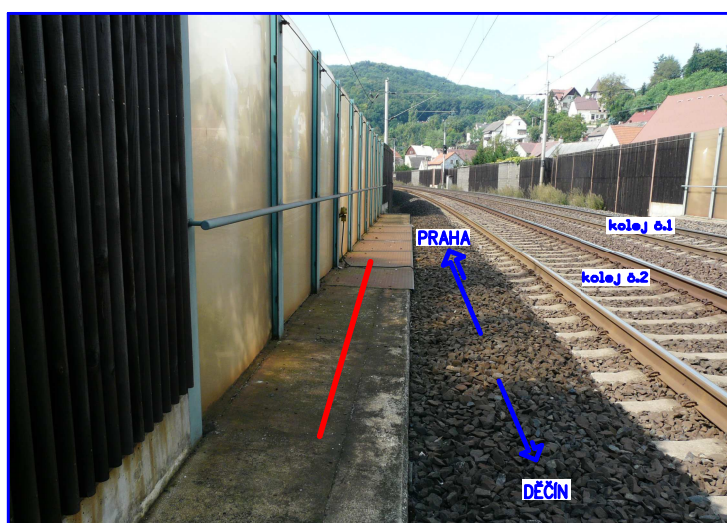
obrázek č.107



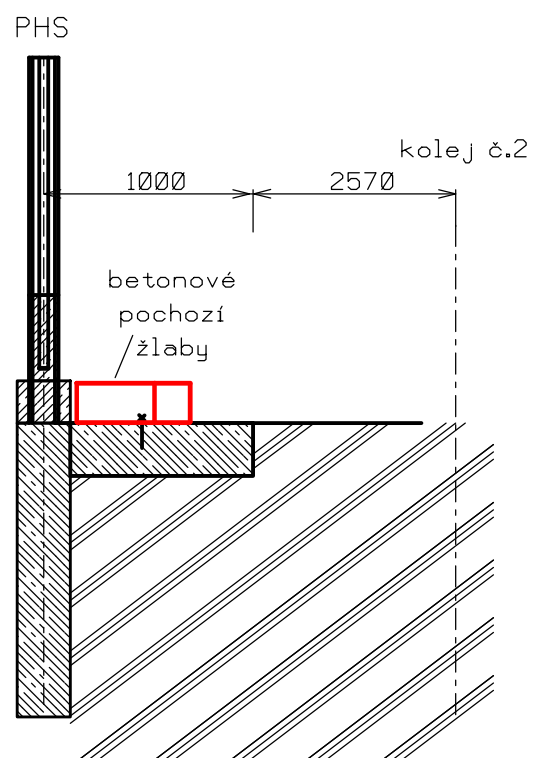
— Navrhovaná kabelová trasa podél PHS



most km 507,095



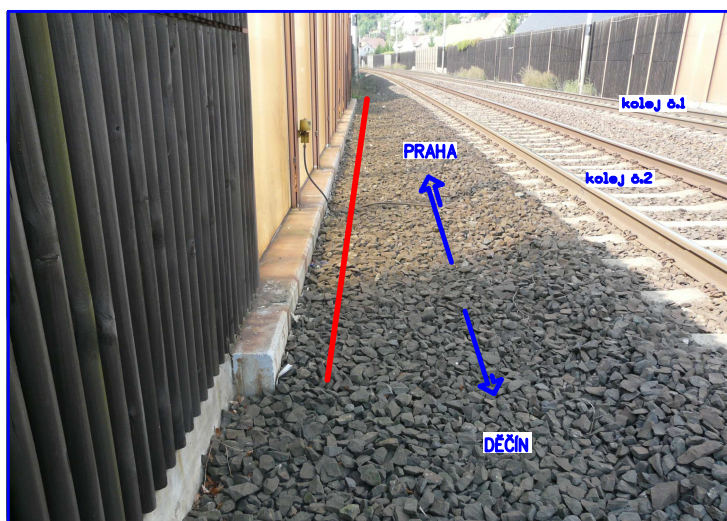
obrázek č.108



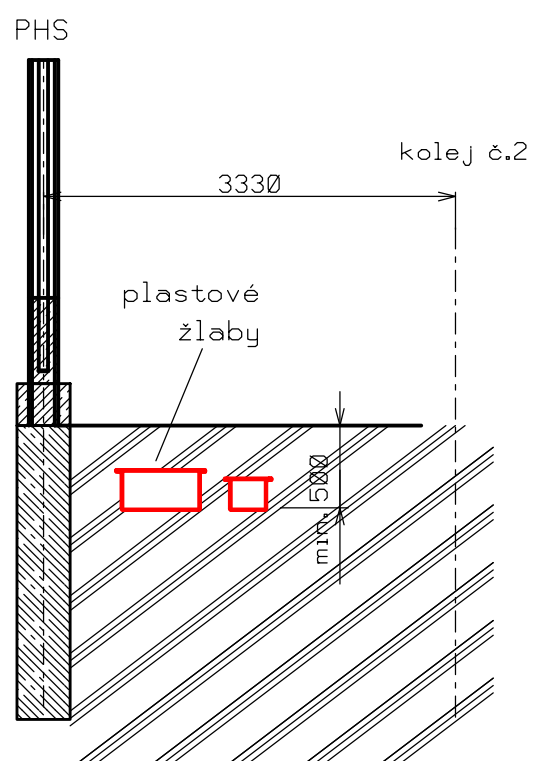
— Navrhovaná kabelová trasa podél PHS



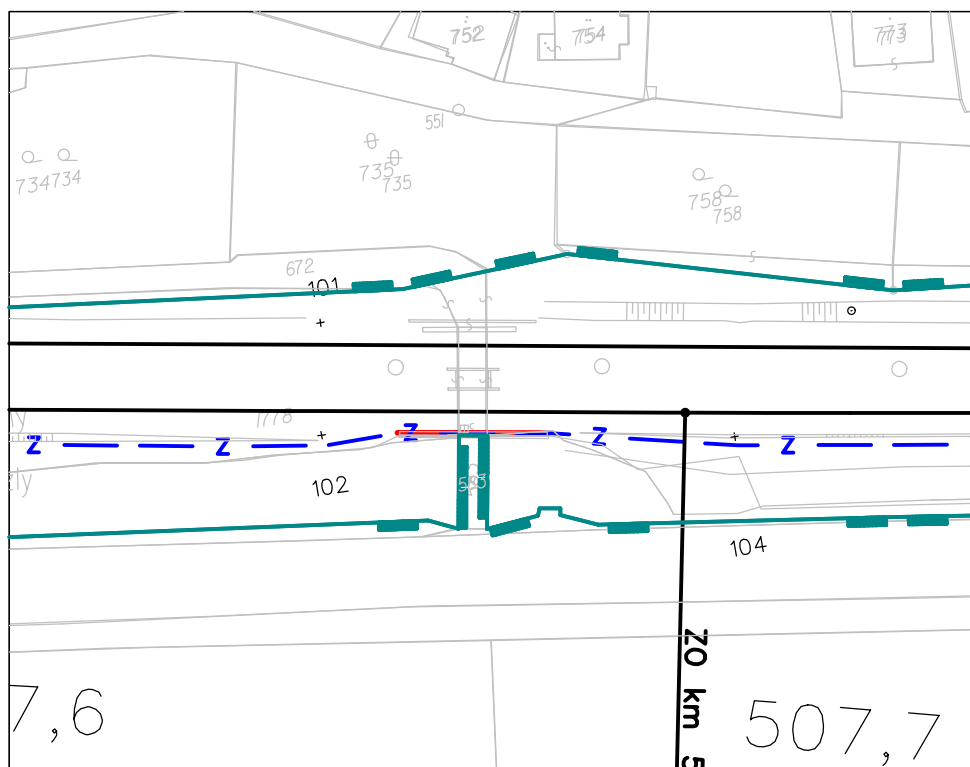
most km 507,173



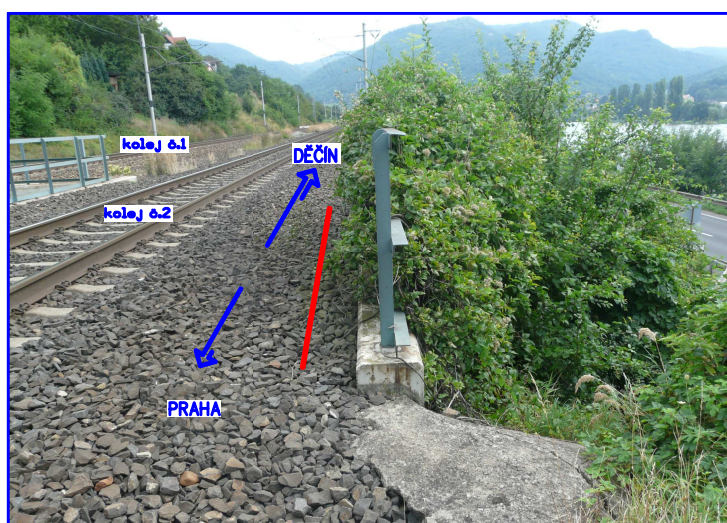
obrázek č.109



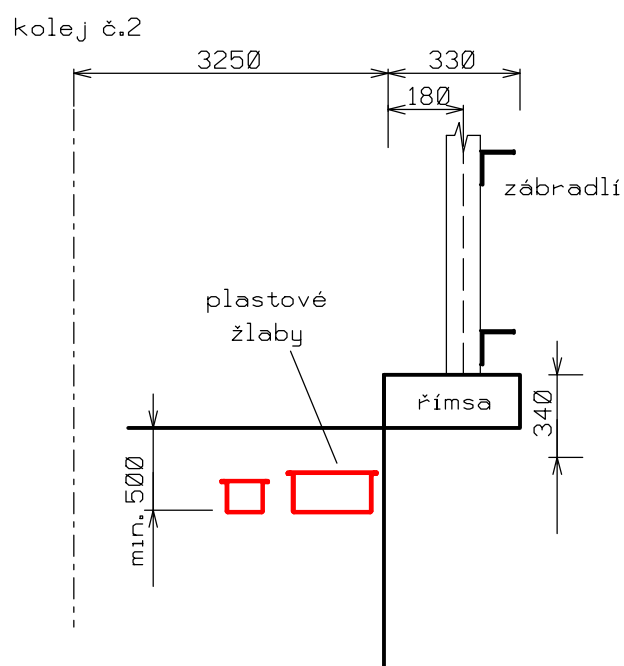
— Navrhovaná kabelová trasa podél PHS



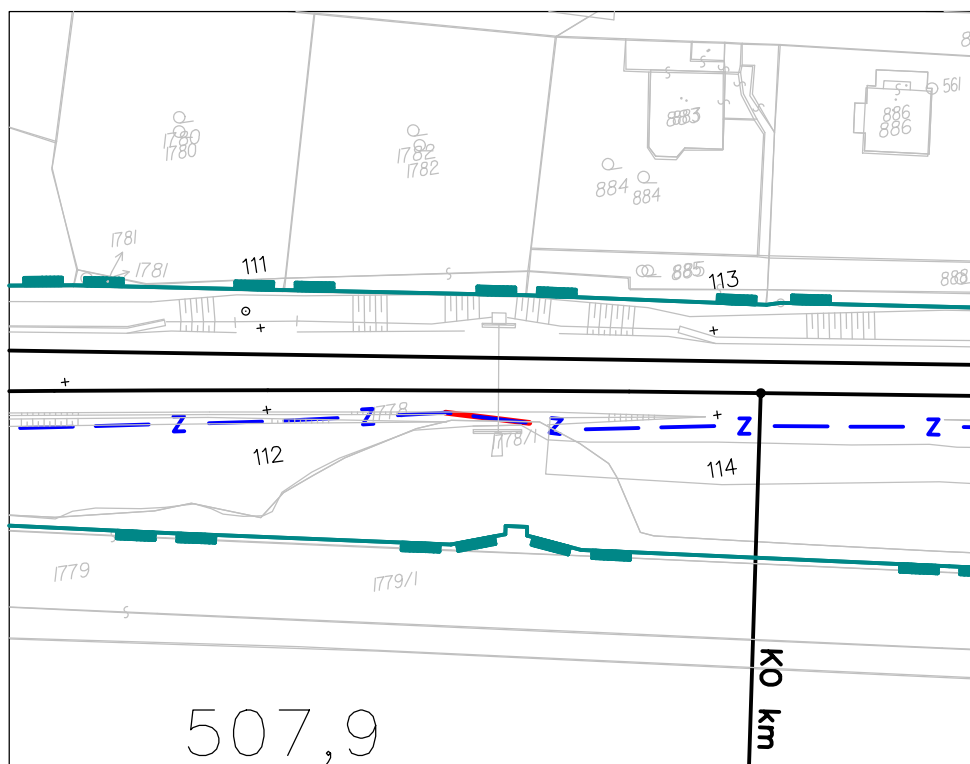
most km 507,638



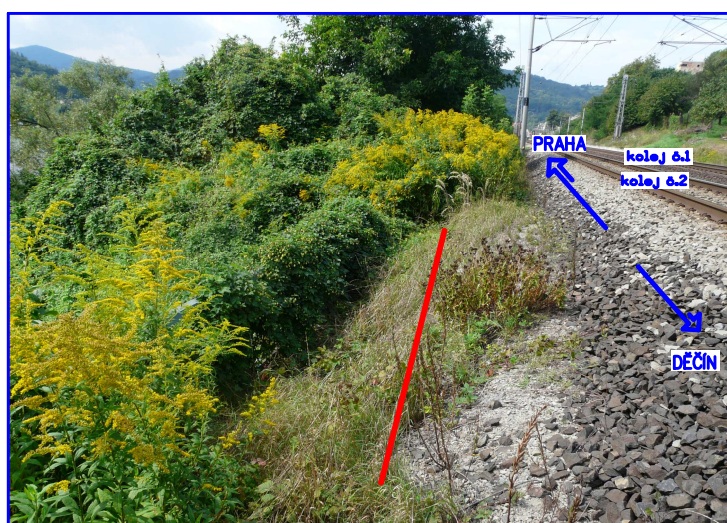
obrázek č.110



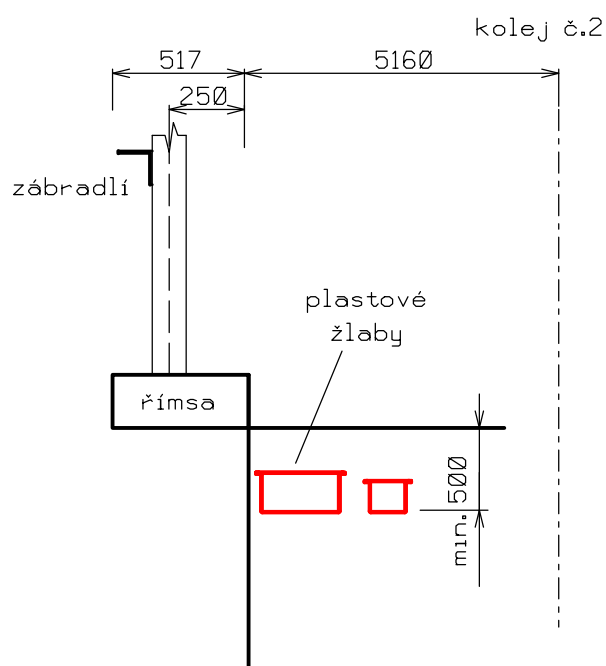
— Navrhovaná kabelová trasa mezi římsou mostu a kolejí



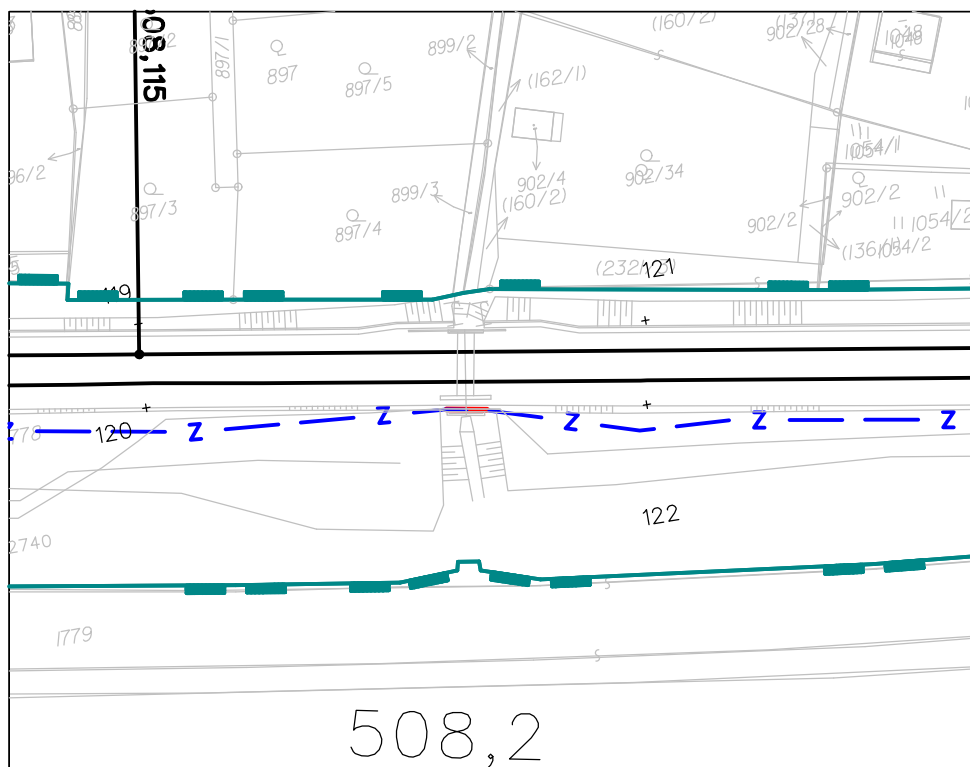
propustek km 507,922



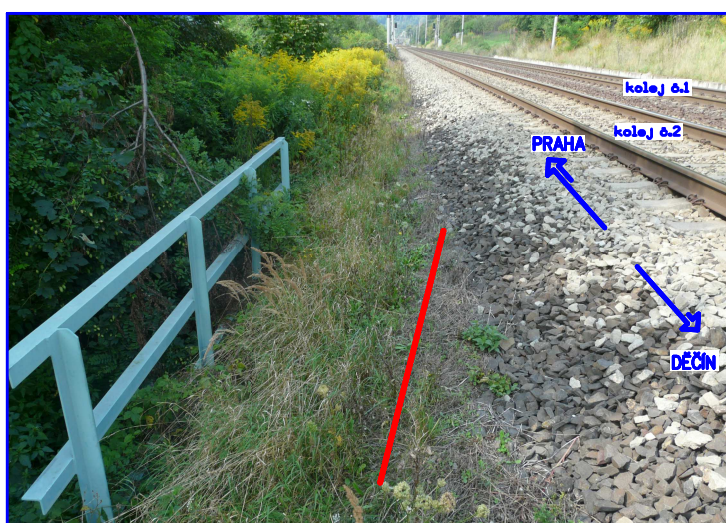
obrázek č.111



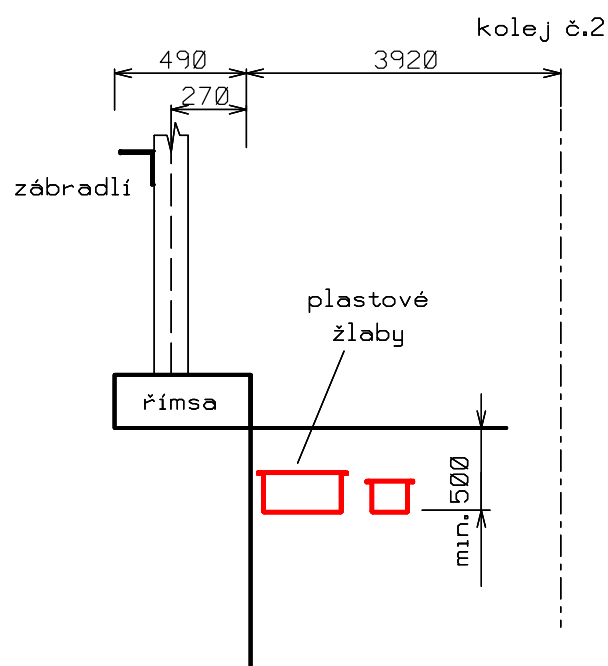
— Navrhovaná kabelová trasa mezi římsou propustku a kolejíštěm



propustek km 508,190



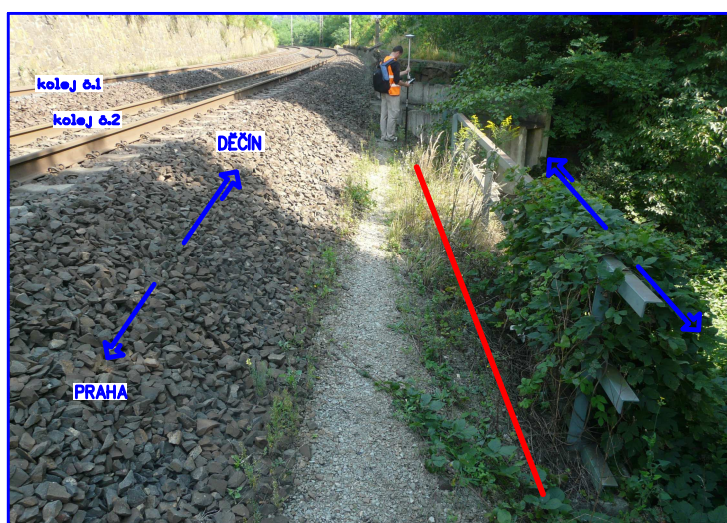
obrázek č.112



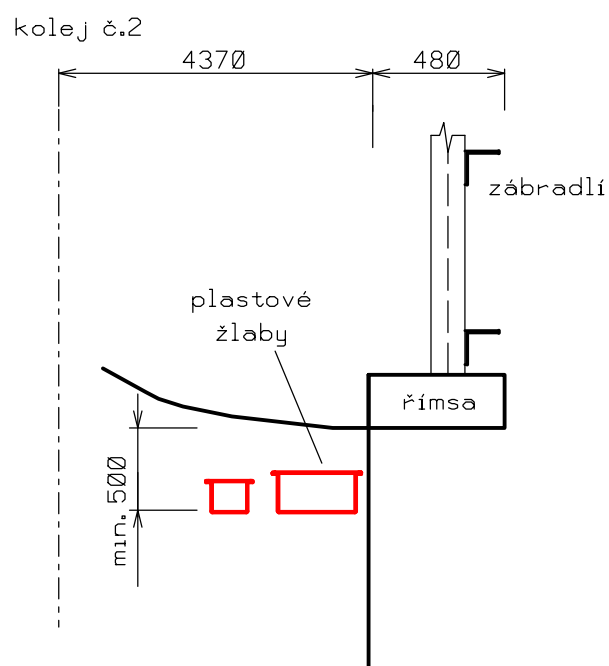
— Navrhovaná kabelová trasa mezi římsou propustku a kolejíštěm



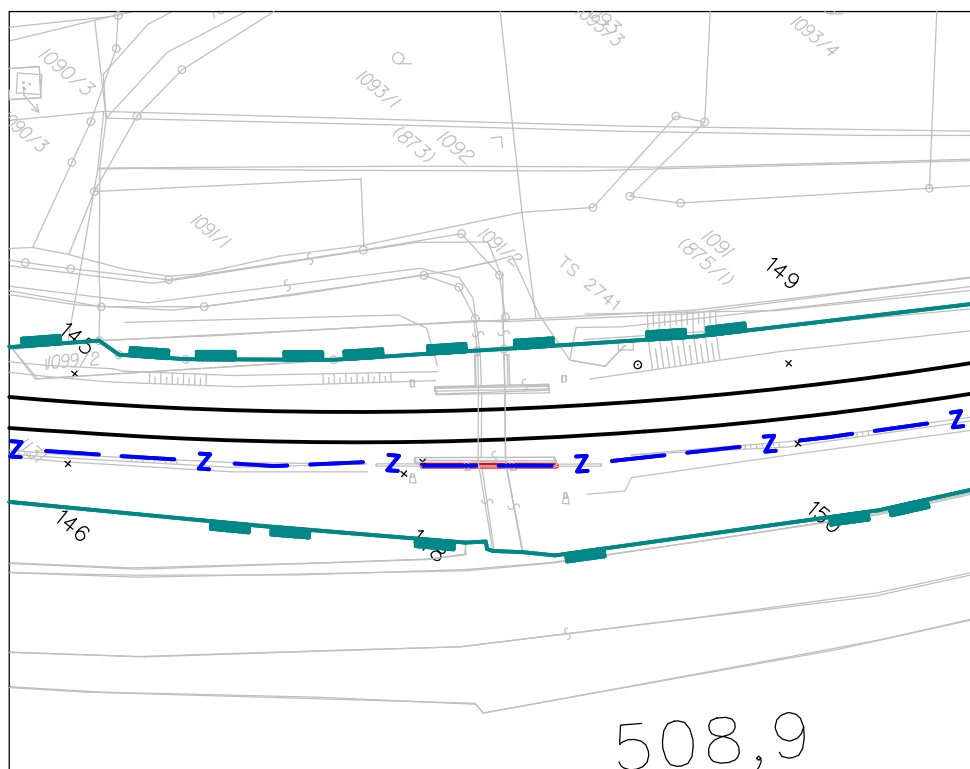
propustek km 508,546



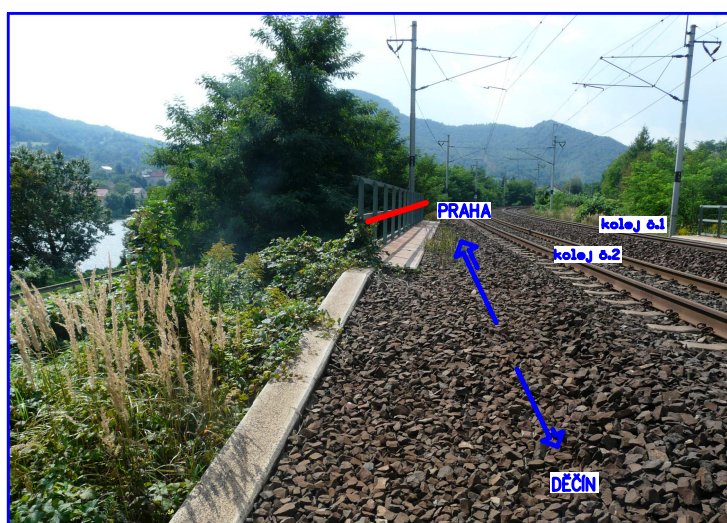
obrázek č.113



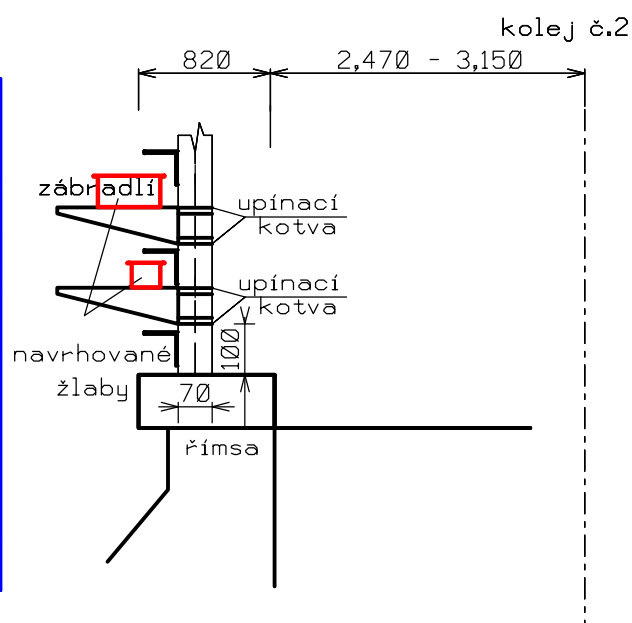
— Navrhovaná kabelová trasa mezi římsou propustku a kolejíštěm



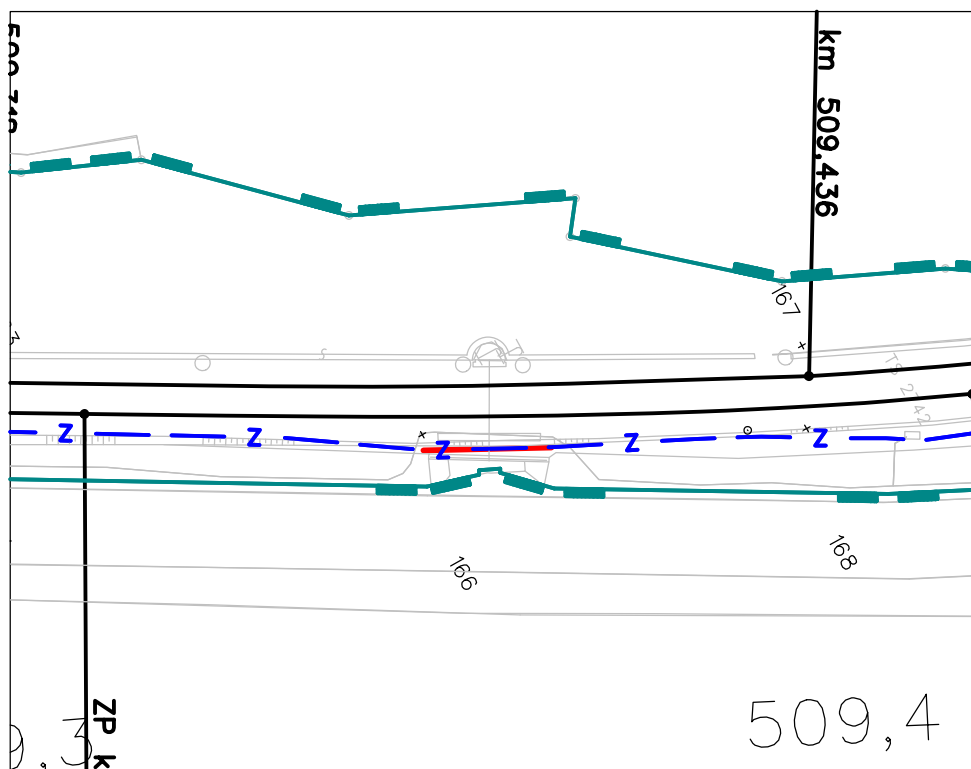
508,9
most km 508,870



obrázek č.114



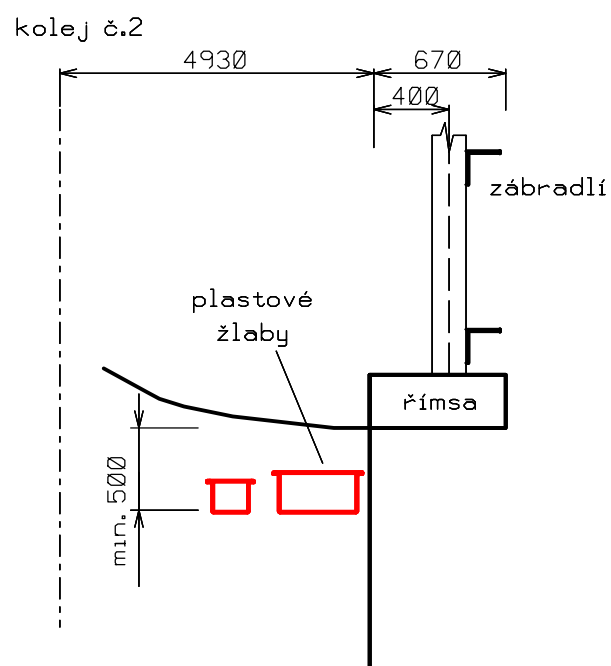
— Navrhovaná kabelová trasa podél zábradlí



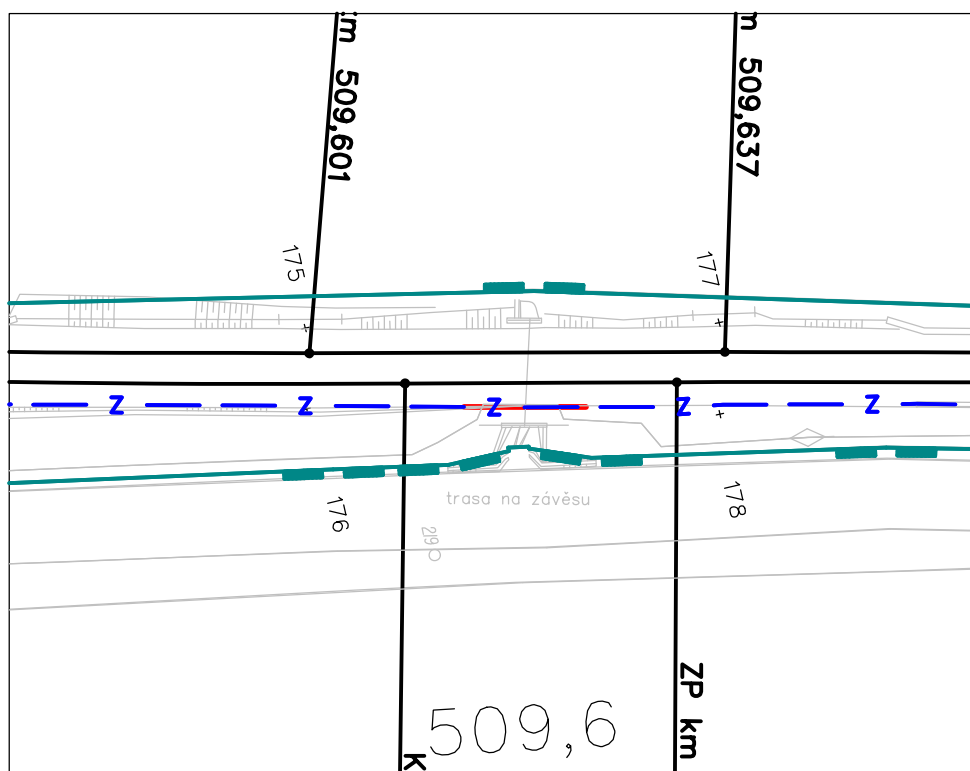
propustek km 509,361



obrázek č.115



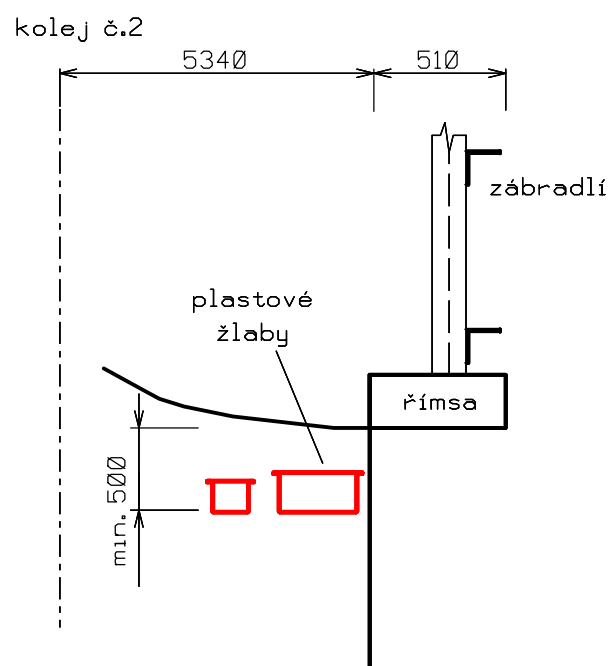
— Navrhovaná kabelová trasa mezi římsou propustku a kolejíštěm



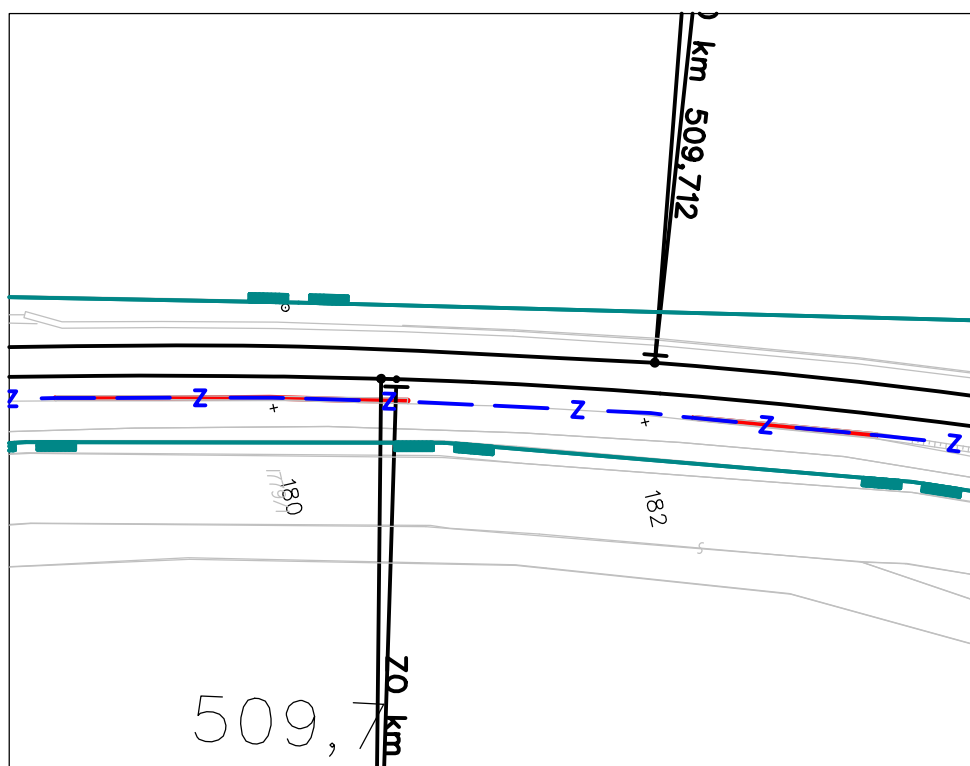
propustek km 509,609



obrázek č.116



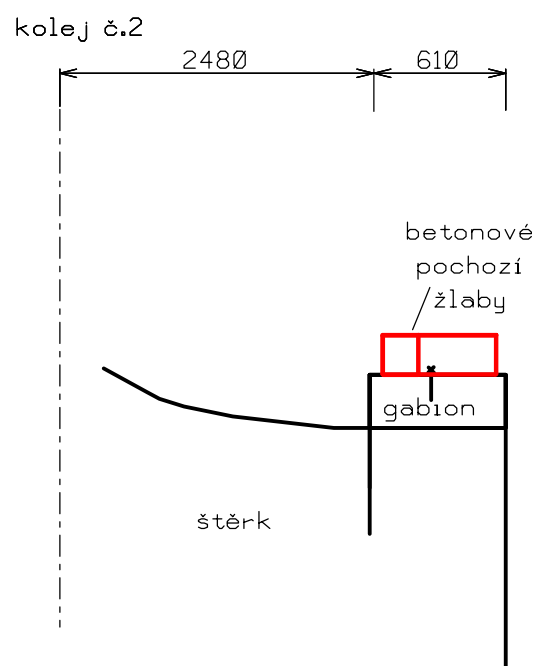
— Navrhovaná kabelová trasa mezi římsou propustku a kolejištěm



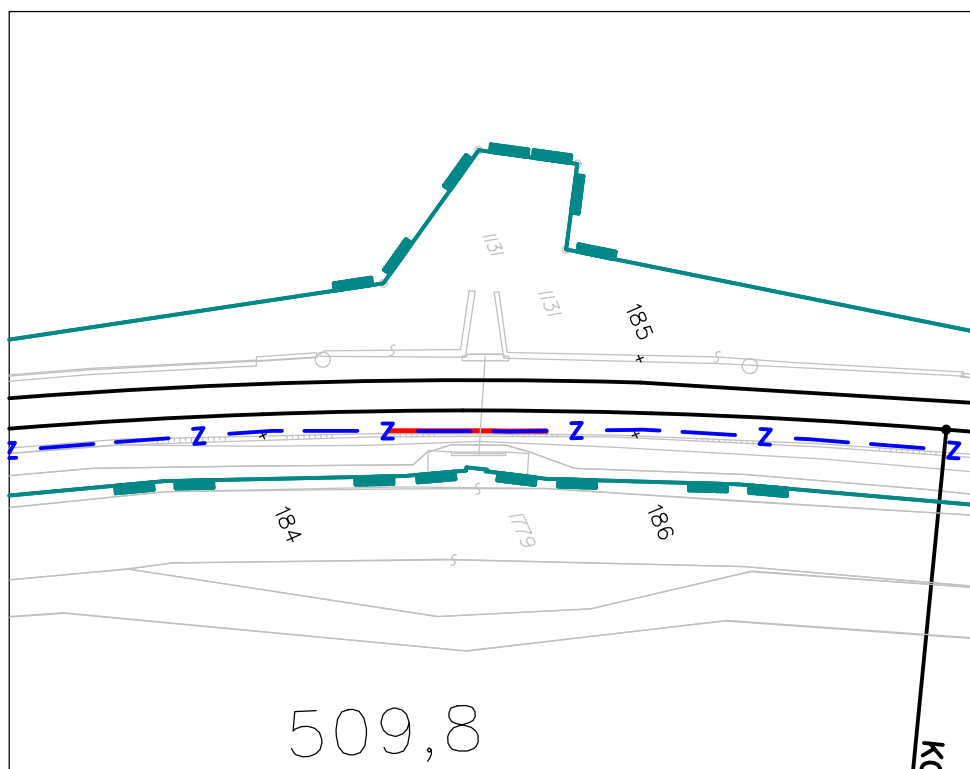
gabion km 509,664 - 509,713
km 509,750 - 509,774



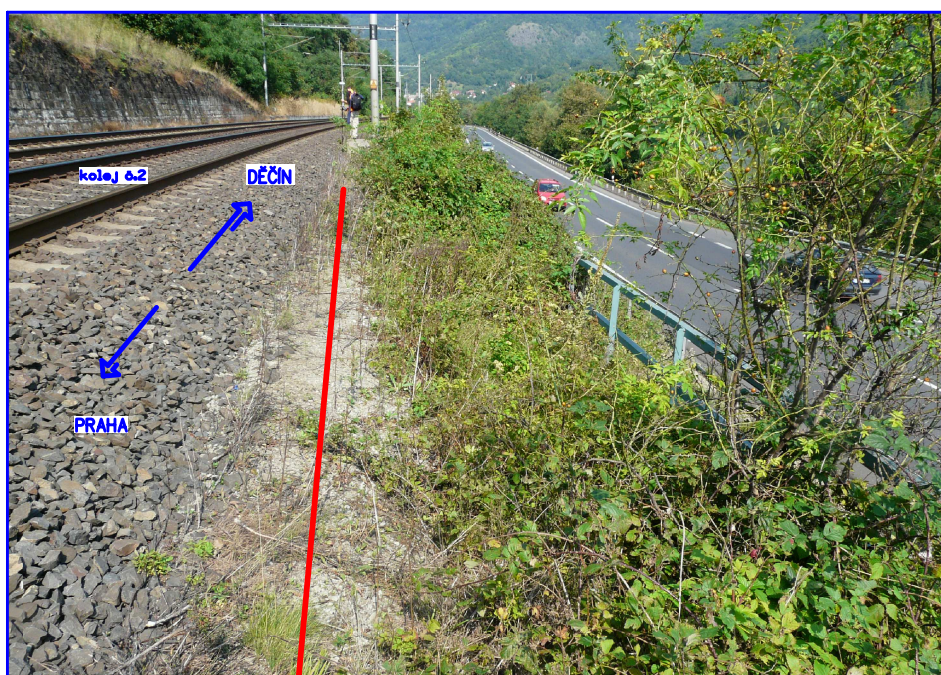
obrázek č.117



— Navrhovaná kabelová trasa vedena na gabionu

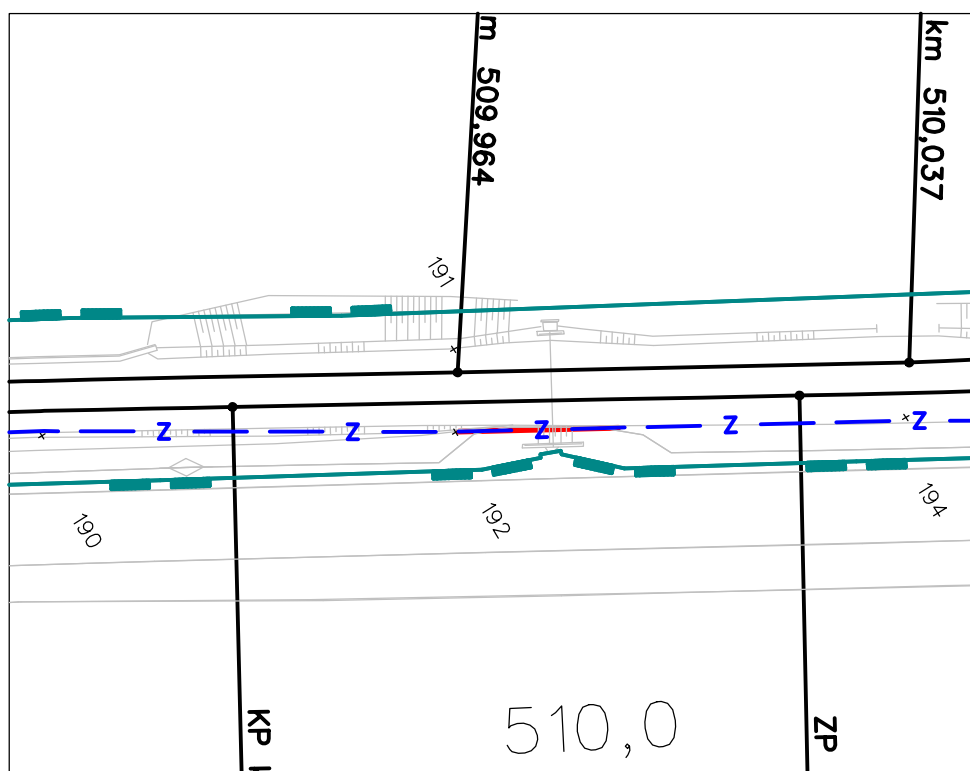


propustek km 509,819

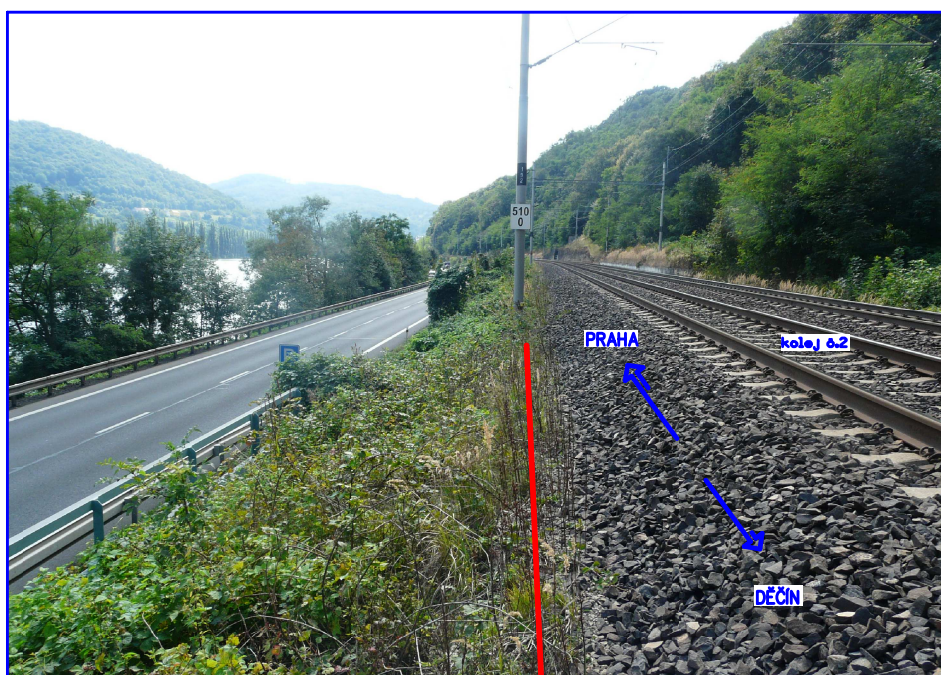


obrázek č.118

— Navrhovaná kabelová trasa mezi římsou propustku a kolejíštěm vedena ve výkopu

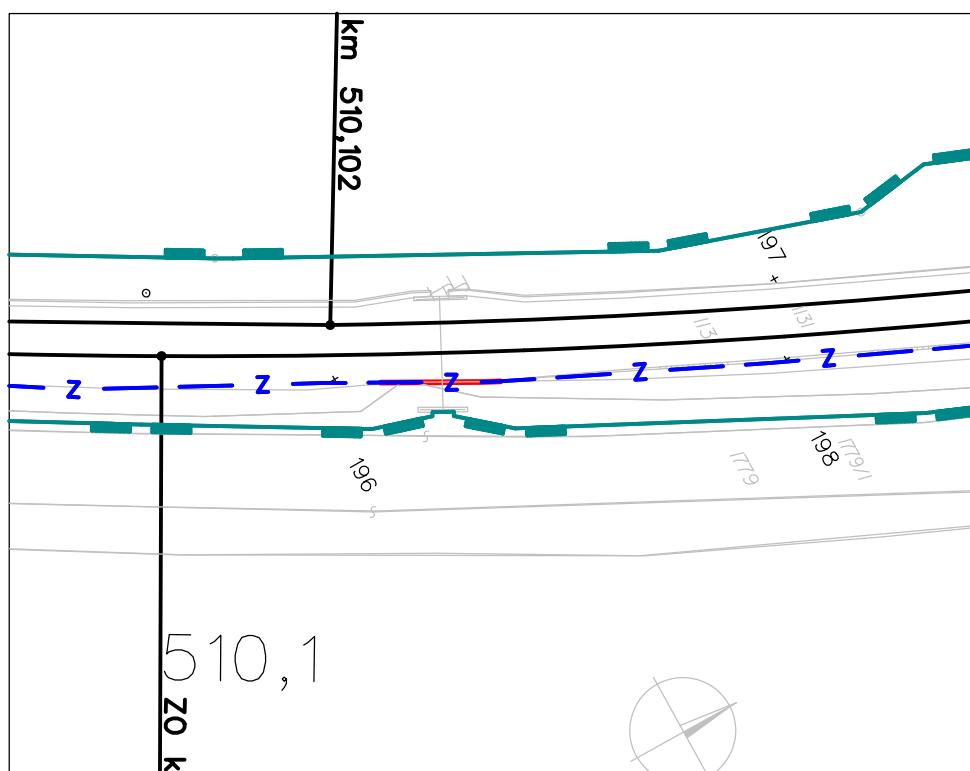


propustek km 510,008

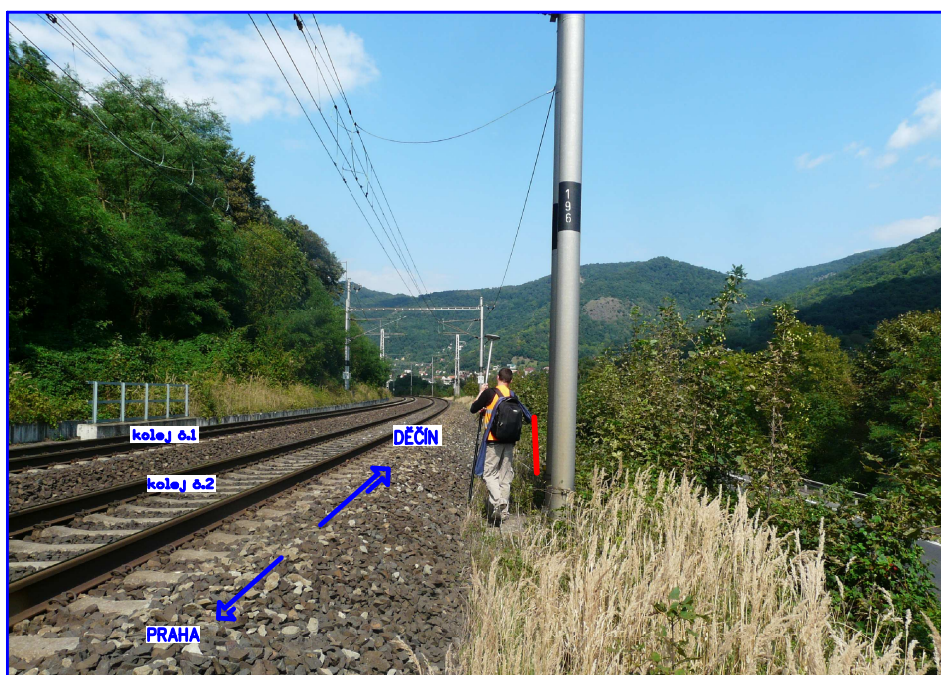


obrázek č.119

— Navrhovaná kabelová trasa mezi římsou propustku a kolejistěm vedena ve výkopu

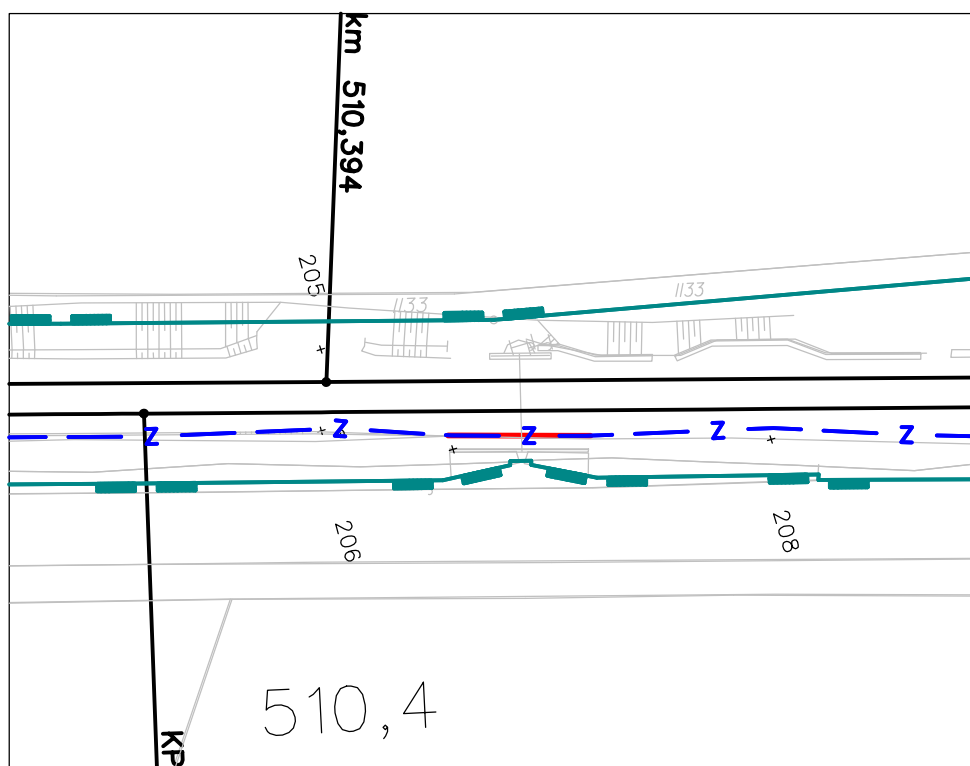


propustek km 510,130

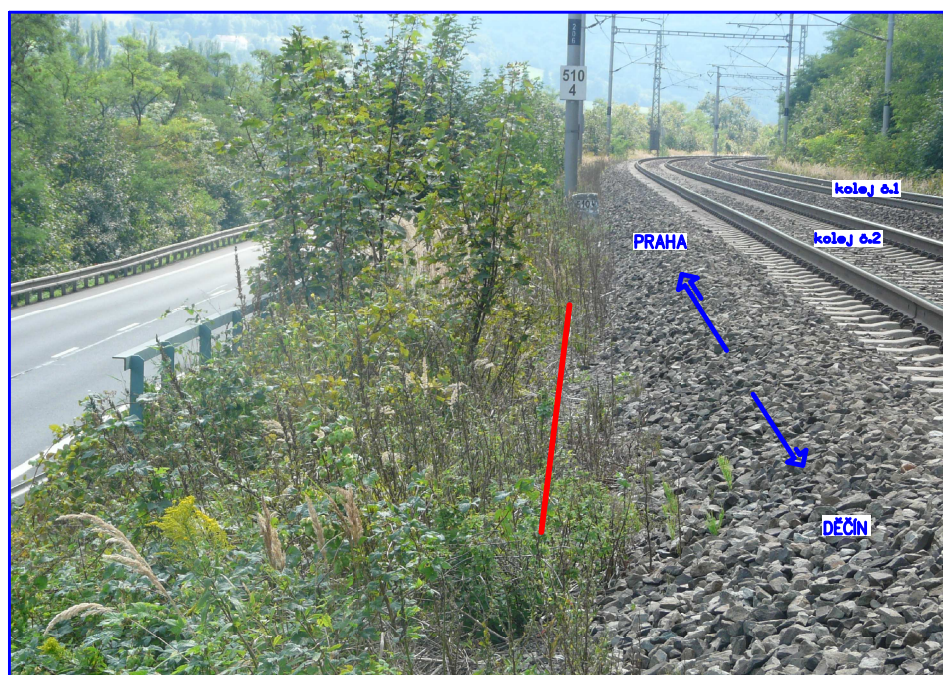


obrázek č.120

— Navrhovaná kabelová trasa mezi římsou propustku a kolejíštěm vedena ve výkopu

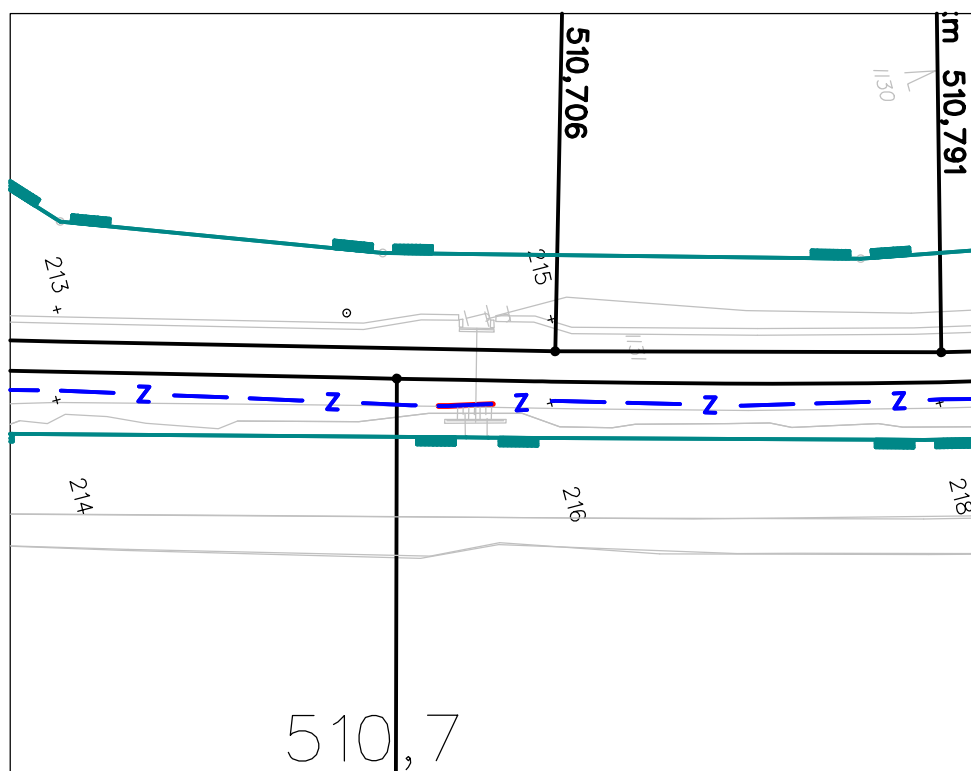


propustek km 510,441

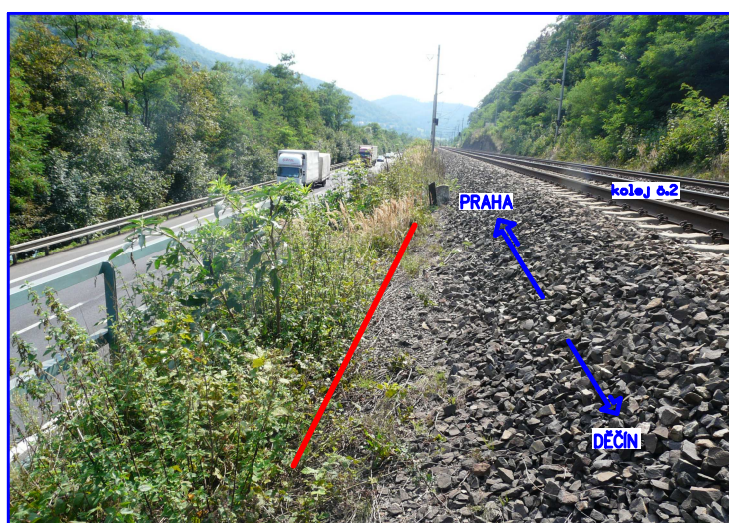


obrázek č.121

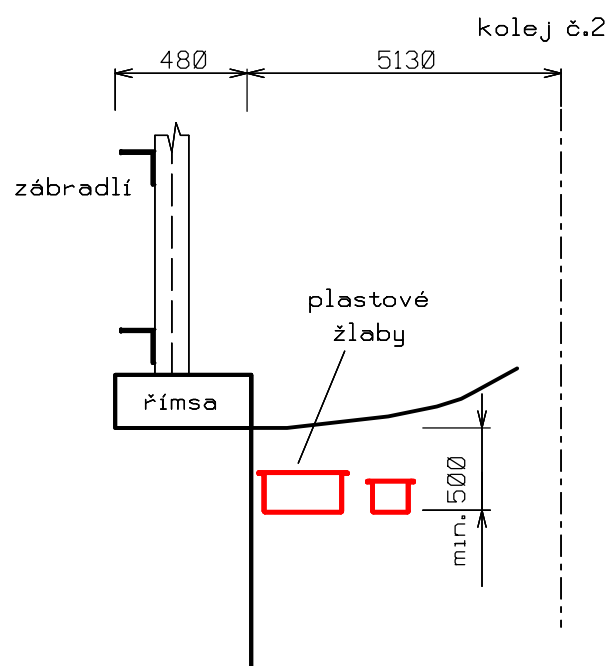
— Navrhovaná kabelová trasa mezi římsou propustku a kolejistěm vedena ve výkopu



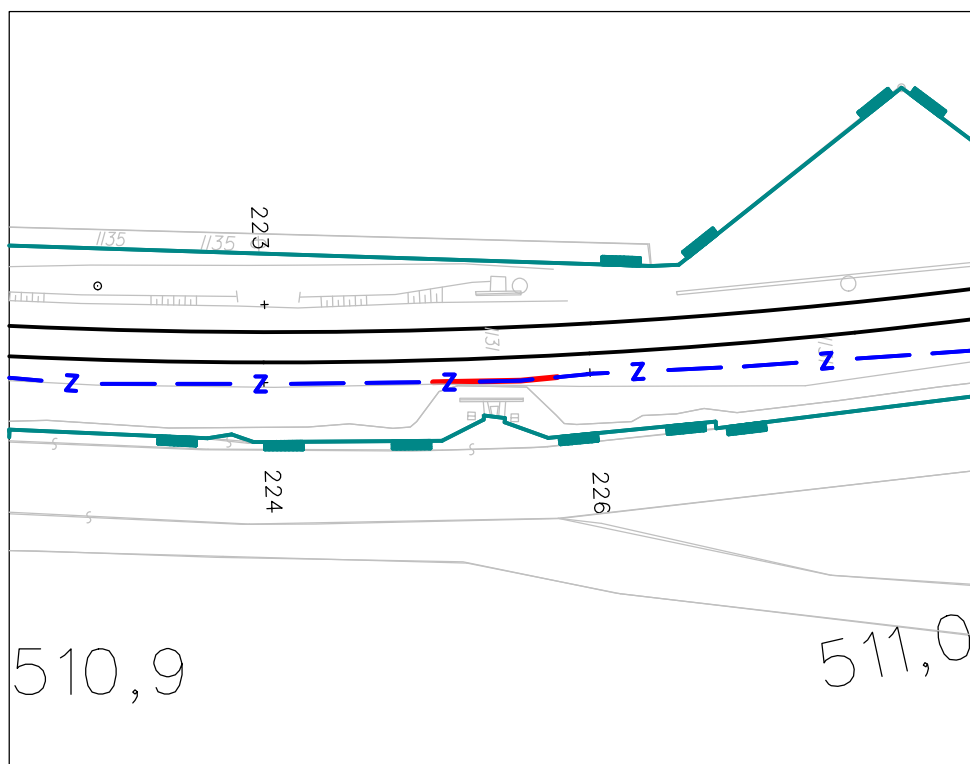
propustek km 510,708



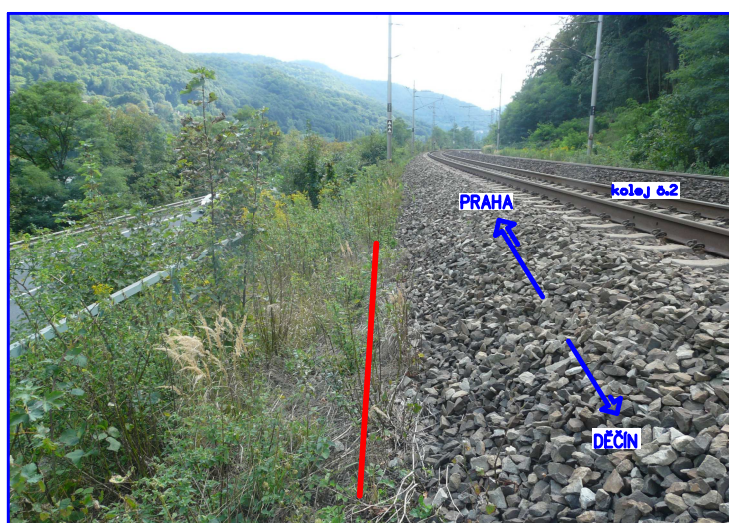
obrázek č.122



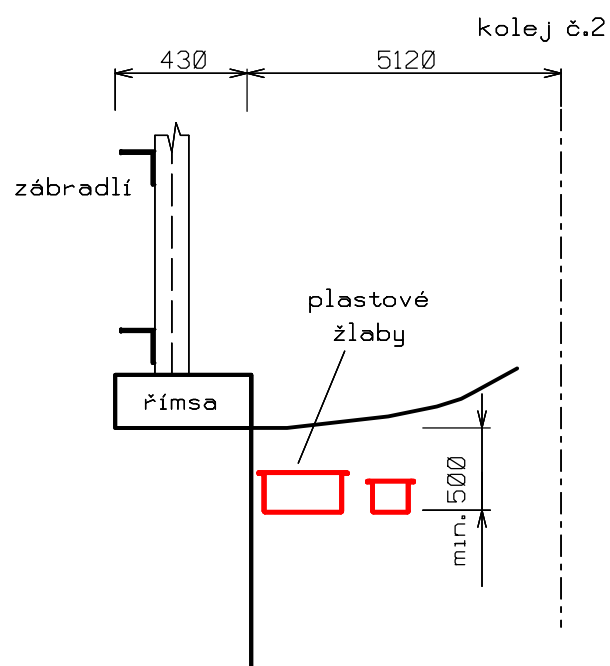
— Navrhovaná kabelová trasa mezi římsou propustku a kolejíštěm



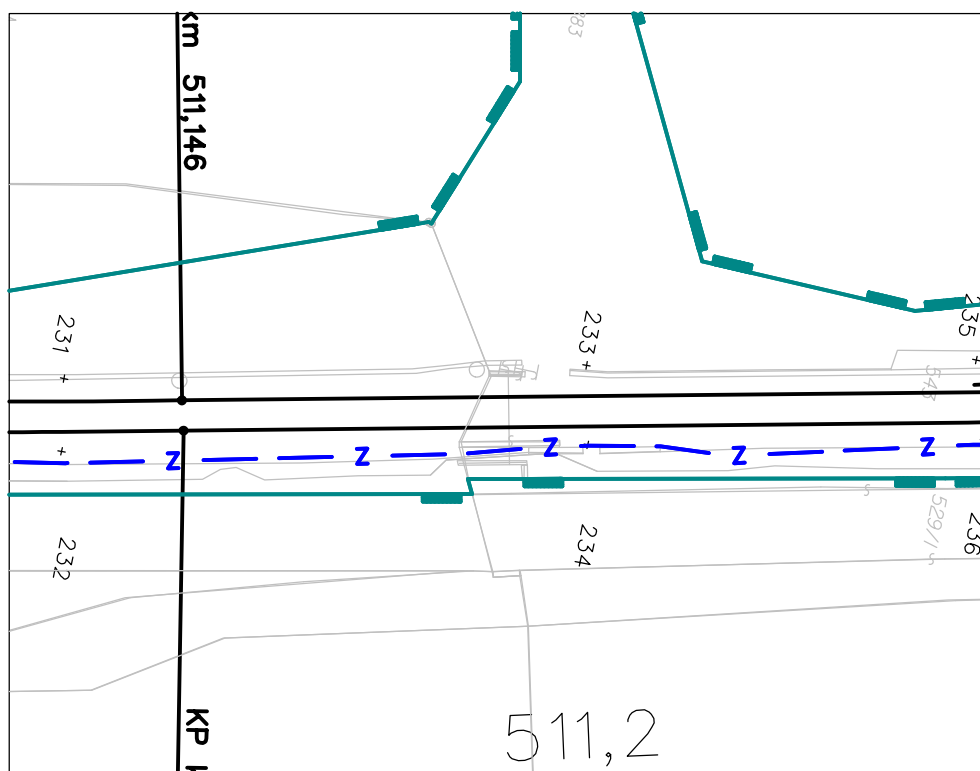
propustek km 510,944



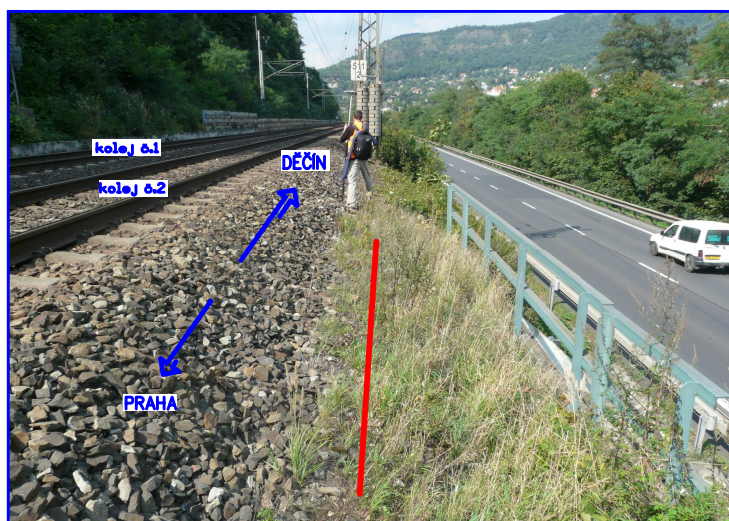
obrázek č.123



— Navrhovaná kabelová trasa mezi římsou propustku a kolejí

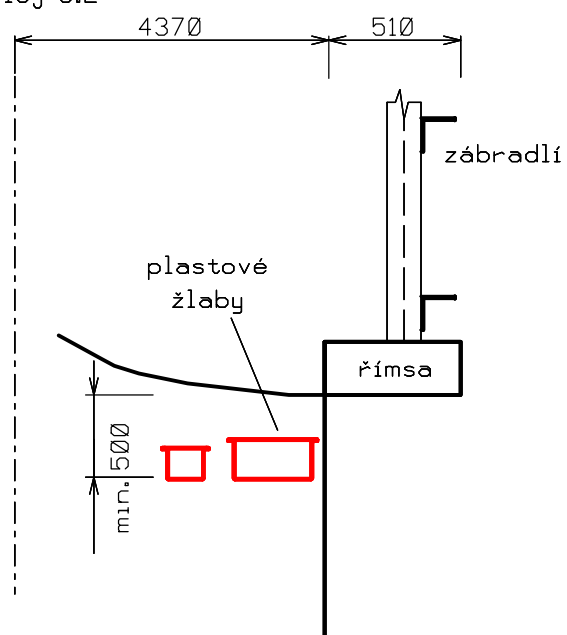


propustek km 511,180

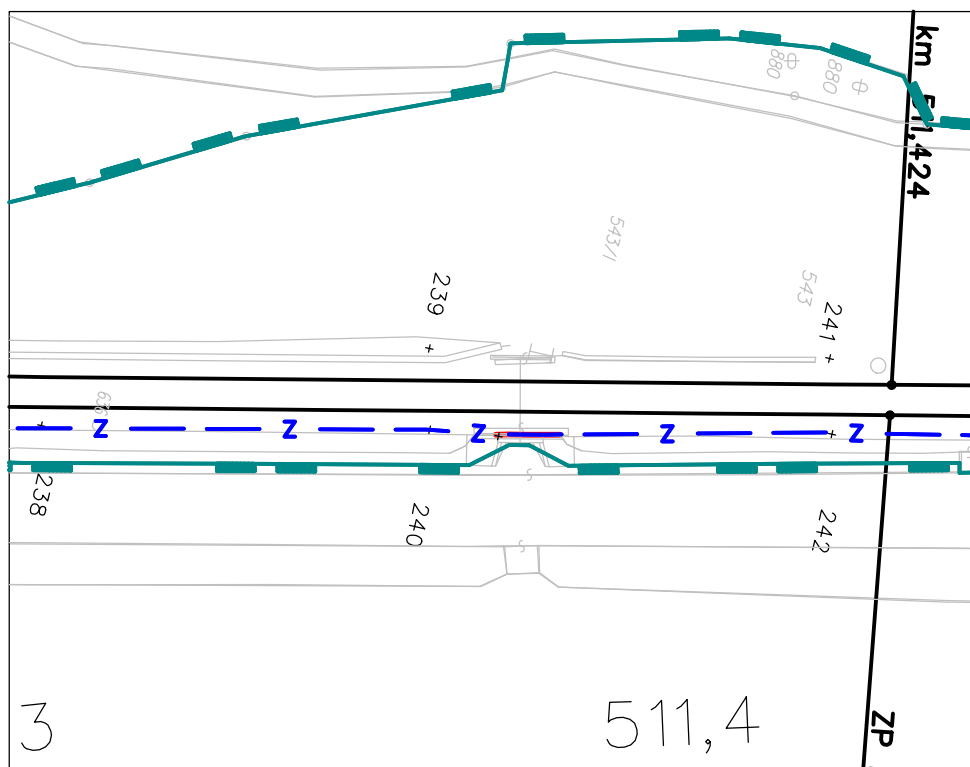


obrázek č.124

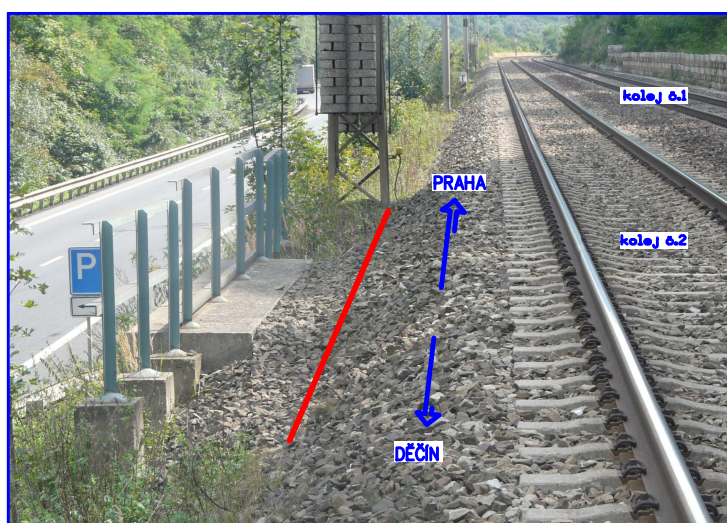
kolej č.2



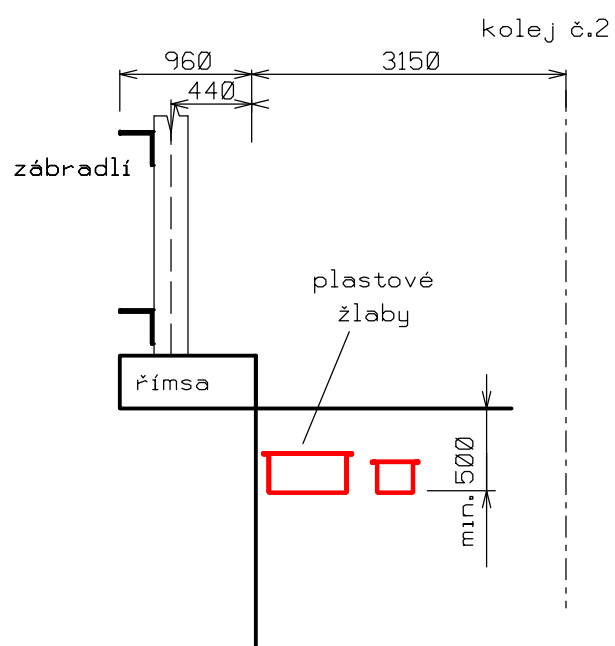
— Navrhovaná kabelová trasa mezi
římsou propustku a kolejistěm



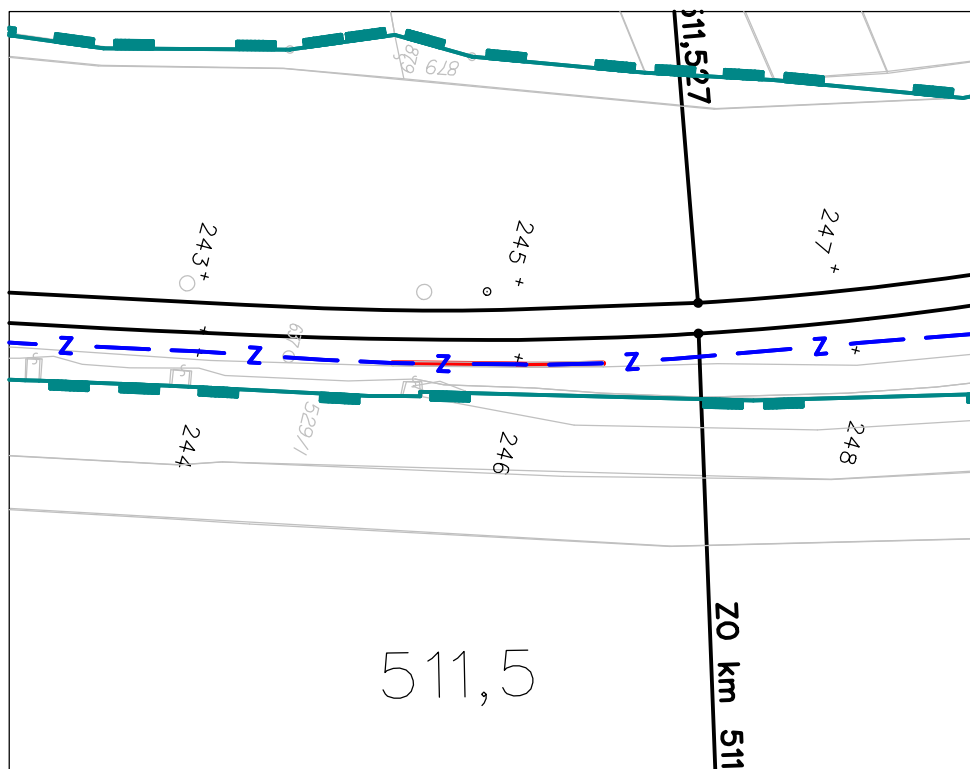
propustek km 511,366



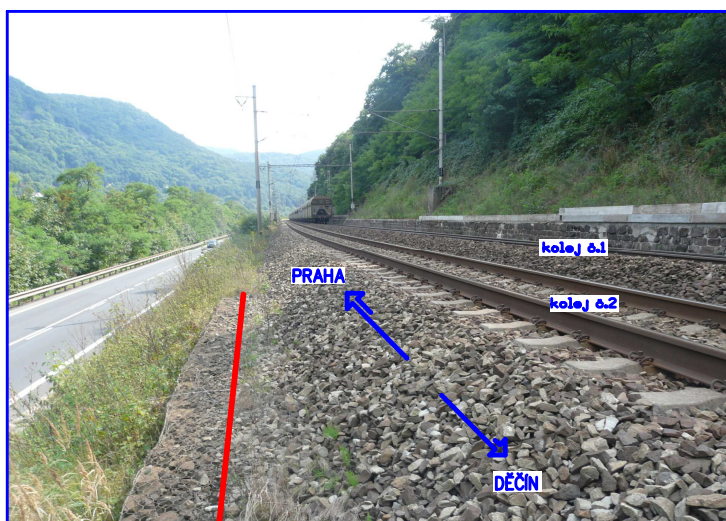
obrázek č.125



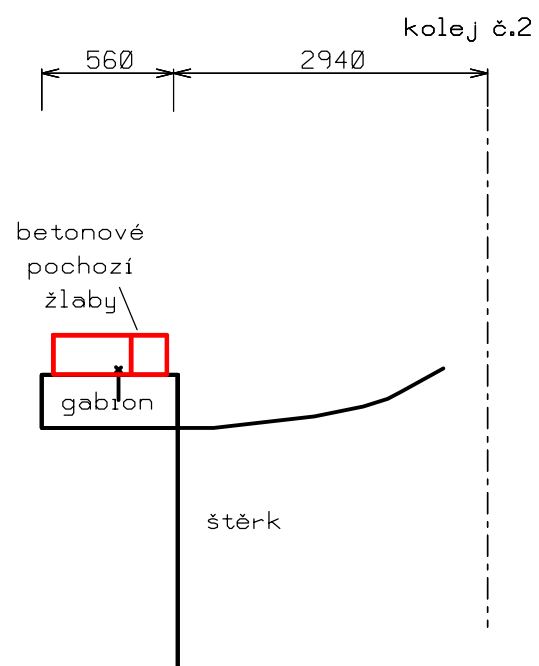
— Navrhovaná kabelová trasa mezi římsou propustku a kolejištěm



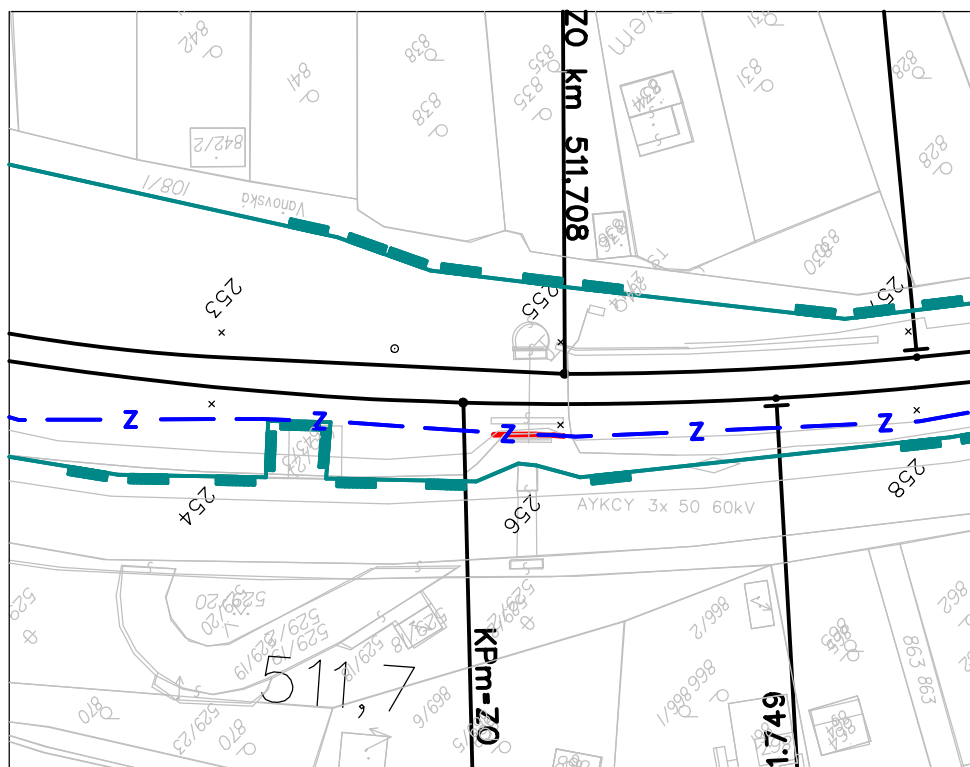
gabion km 511,484 - 511,511



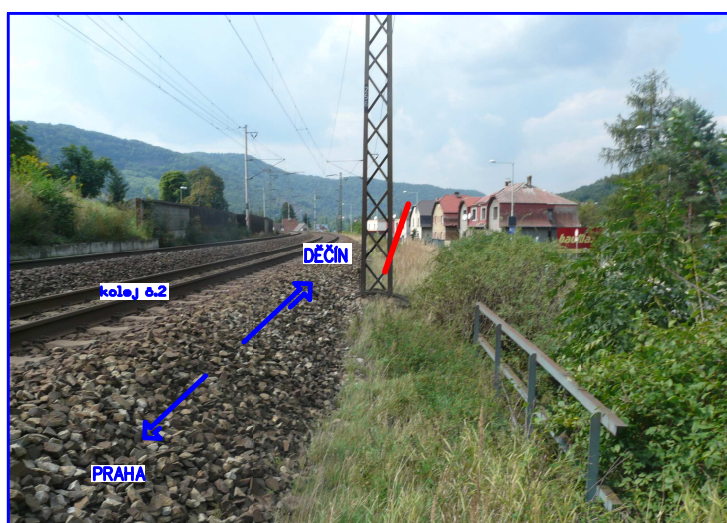
obrázek č.126



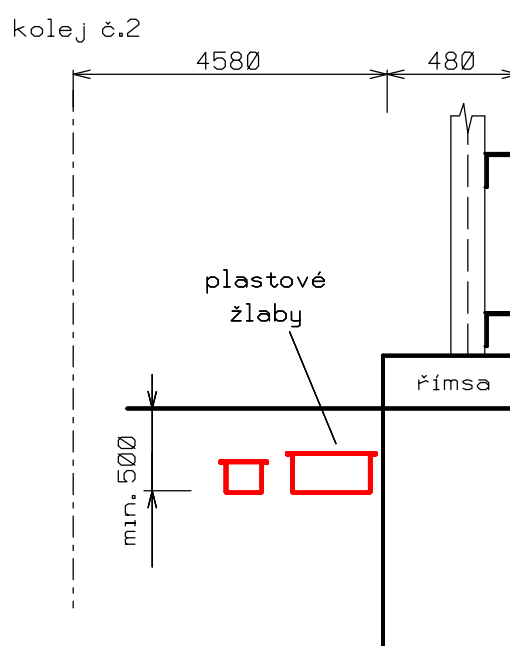
— Navrhovaná kabelová trasa vedena na gabionu



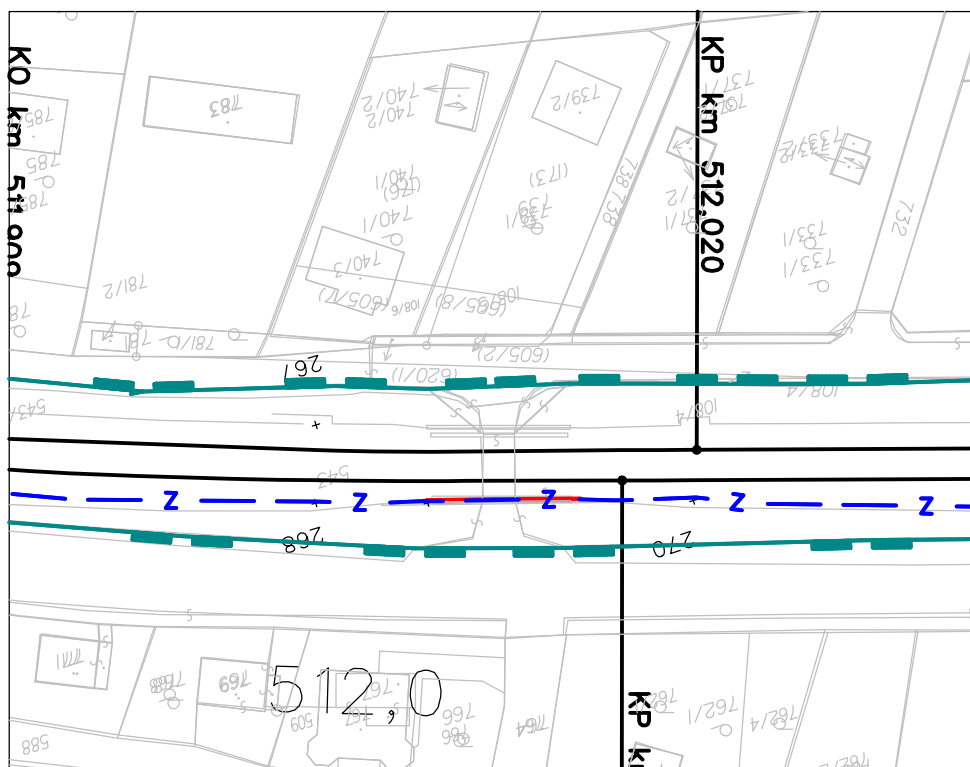
propustek km 511,709



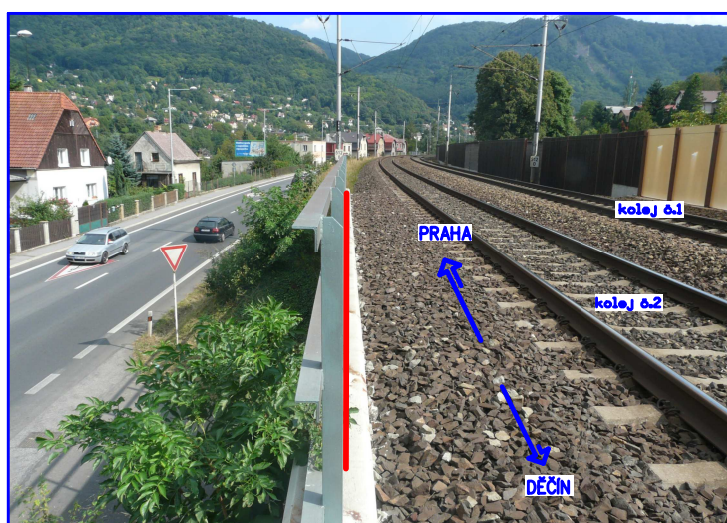
obrázek č.127



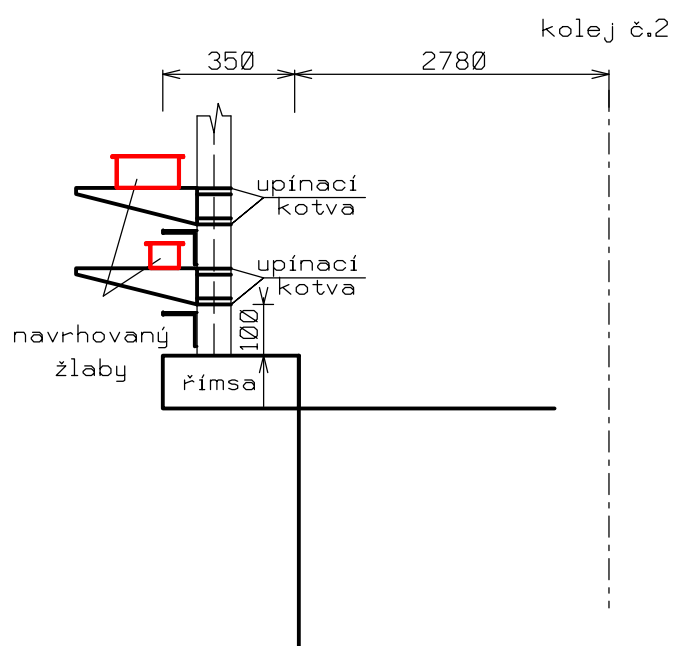
— Navrhovaná kabelová trasa podél římšy propustku



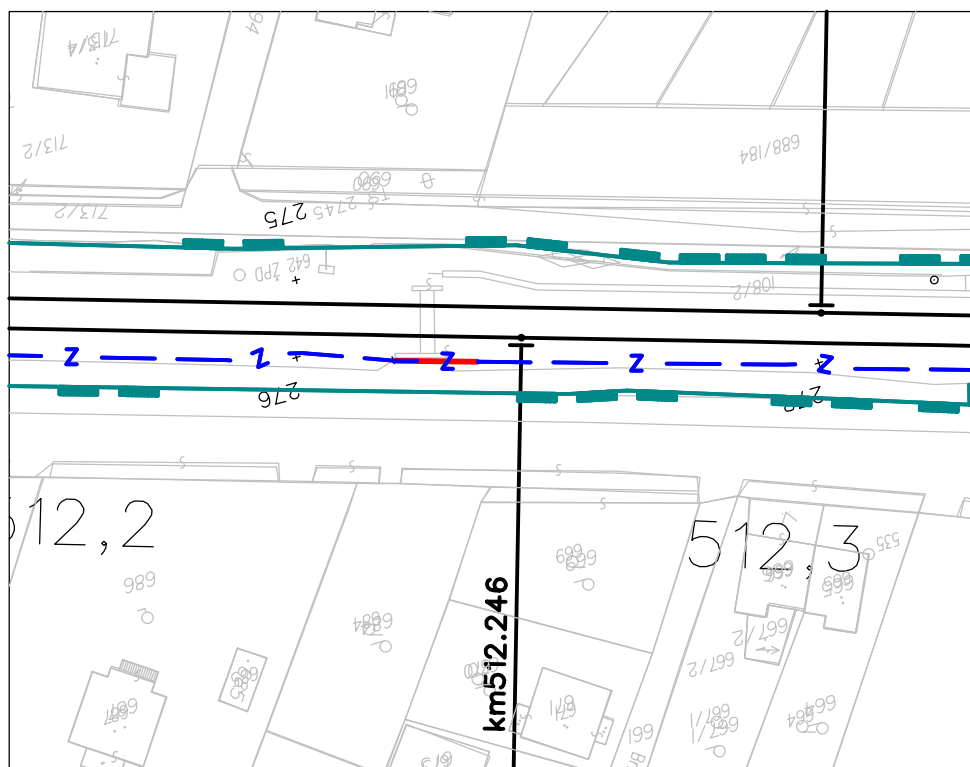
most km 511,997



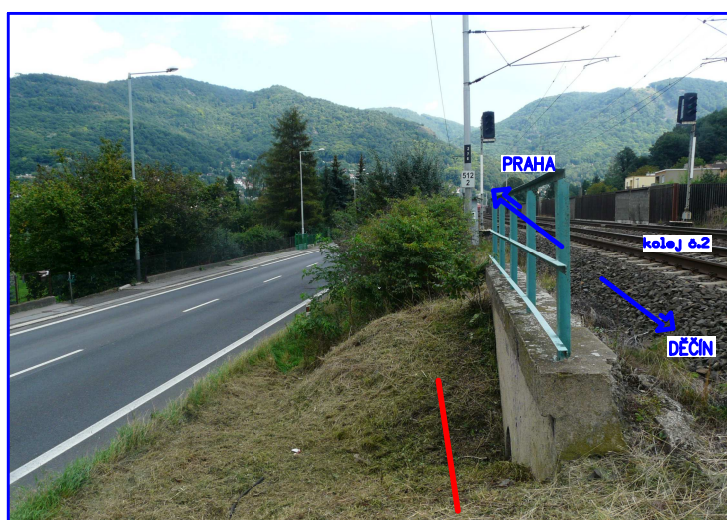
obrázek č.128



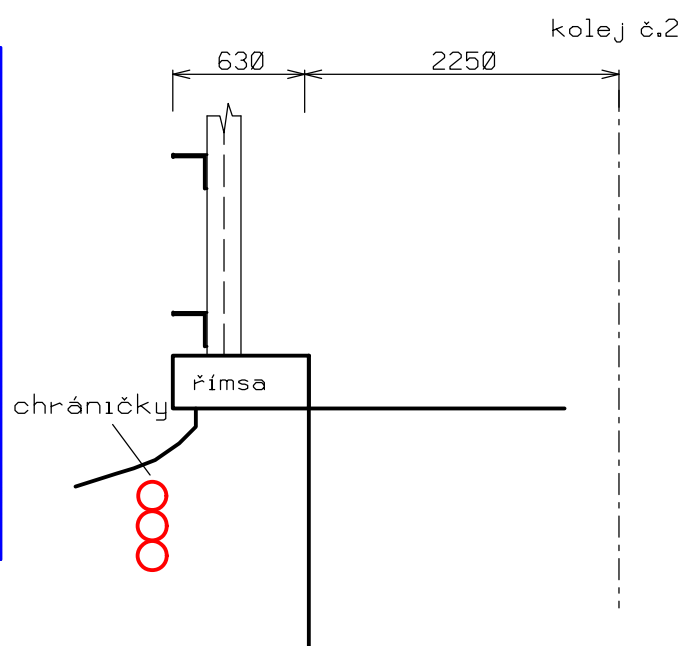
— Navrhovaná kabelová trasa podél zábradlí



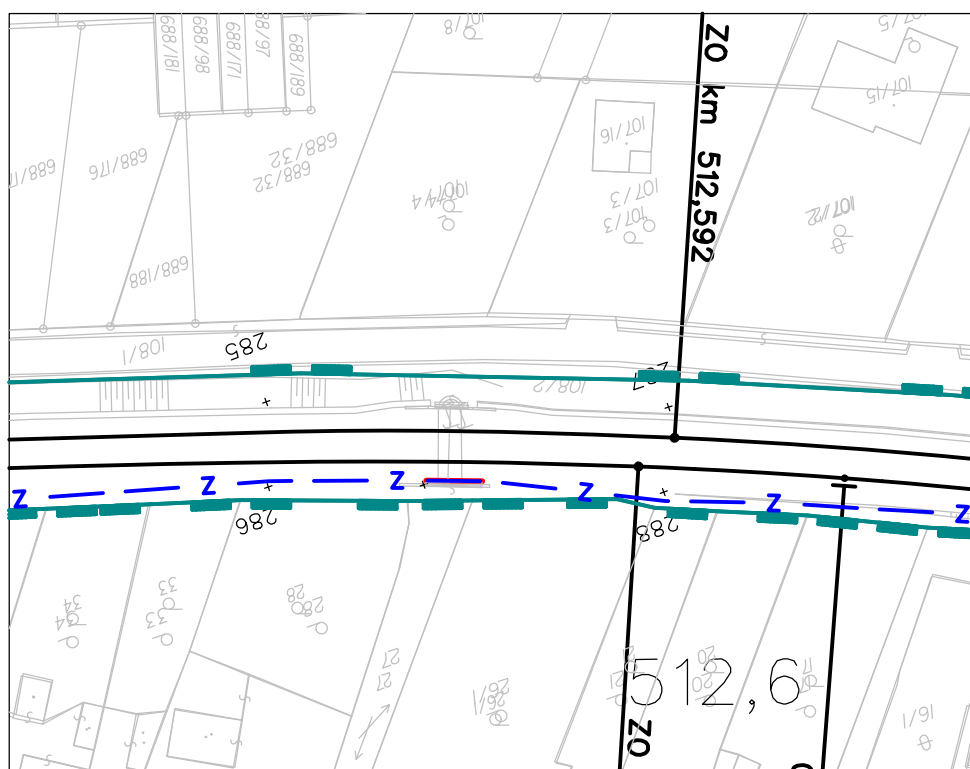
propustek km 512,224



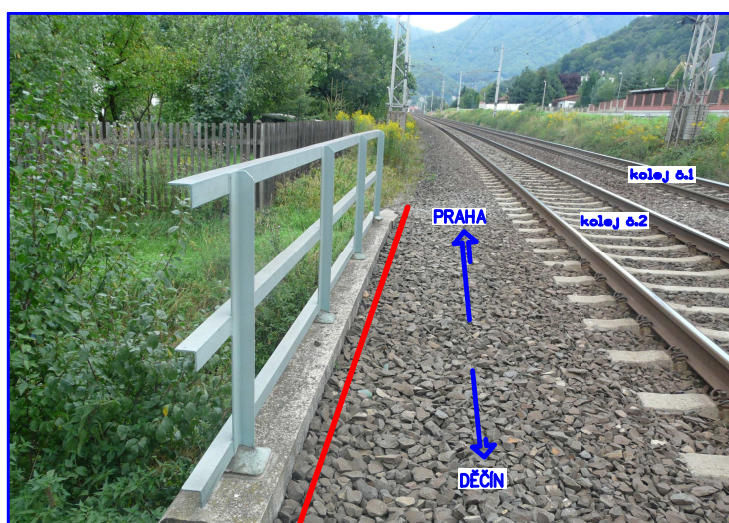
obrázek č.129



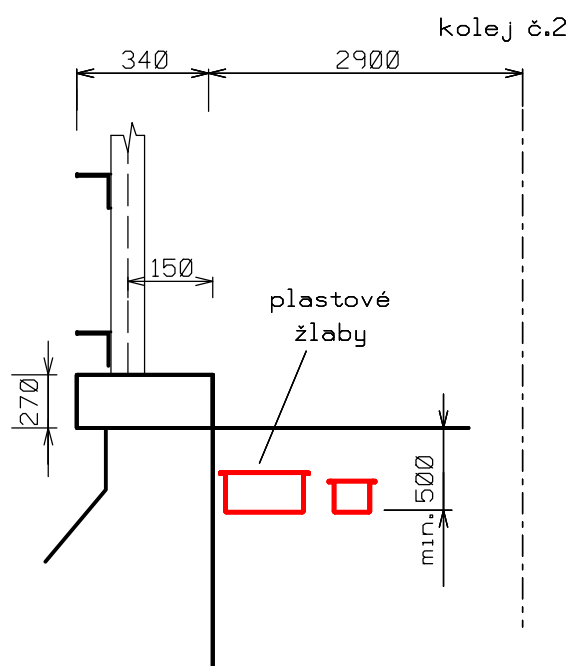
— Navrhovaná kabelová trasa podél římsy propustku



propustek km 512,560



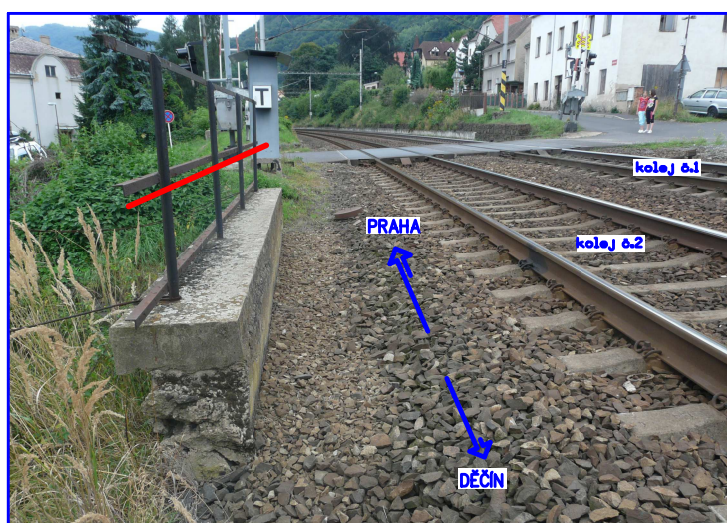
obrázek č.130



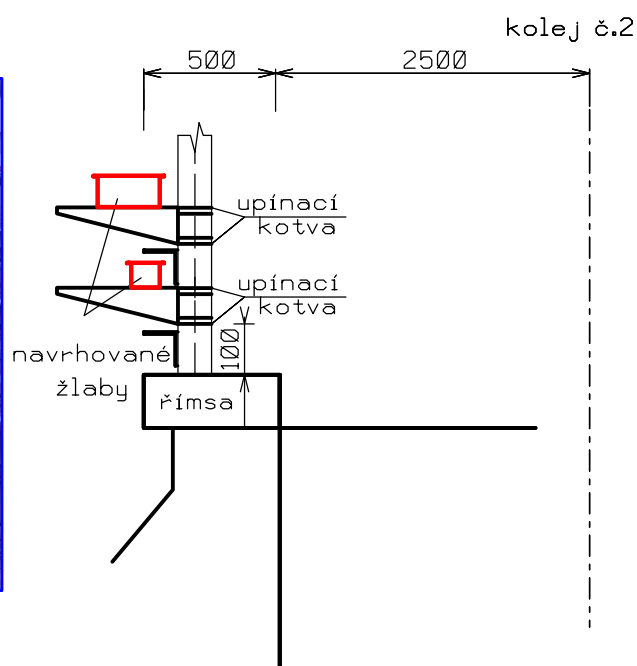
— Navrhovaná kabelová trasa podél římsy propustku



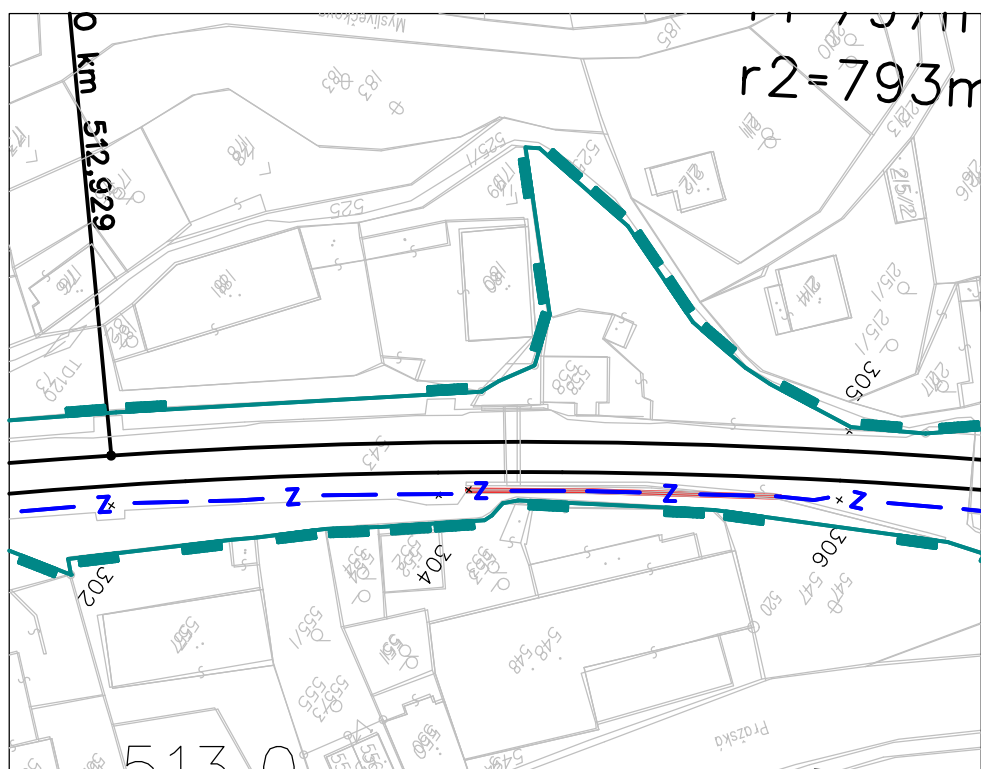
propustek km 512,936



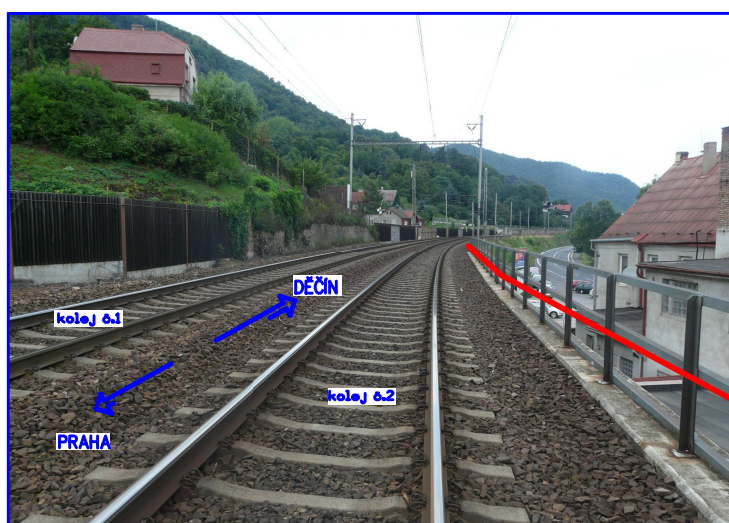
obrázek č.131



— Navrhovaná kabelová trasa podél zábradlí

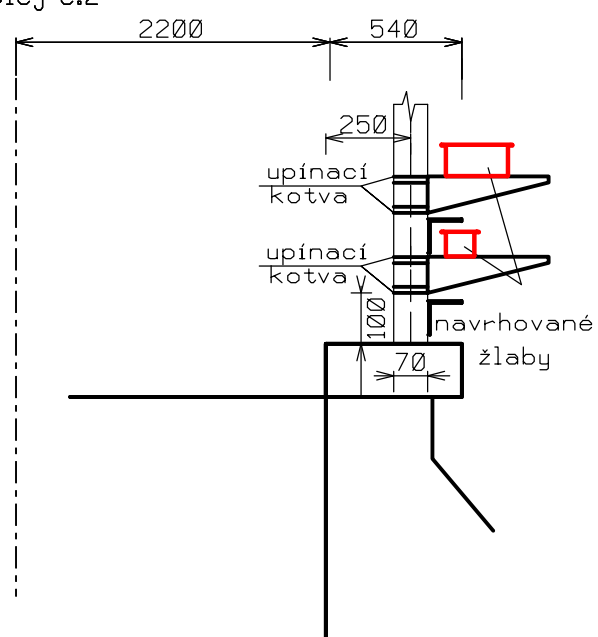


propustek km 513,009 a 513,087

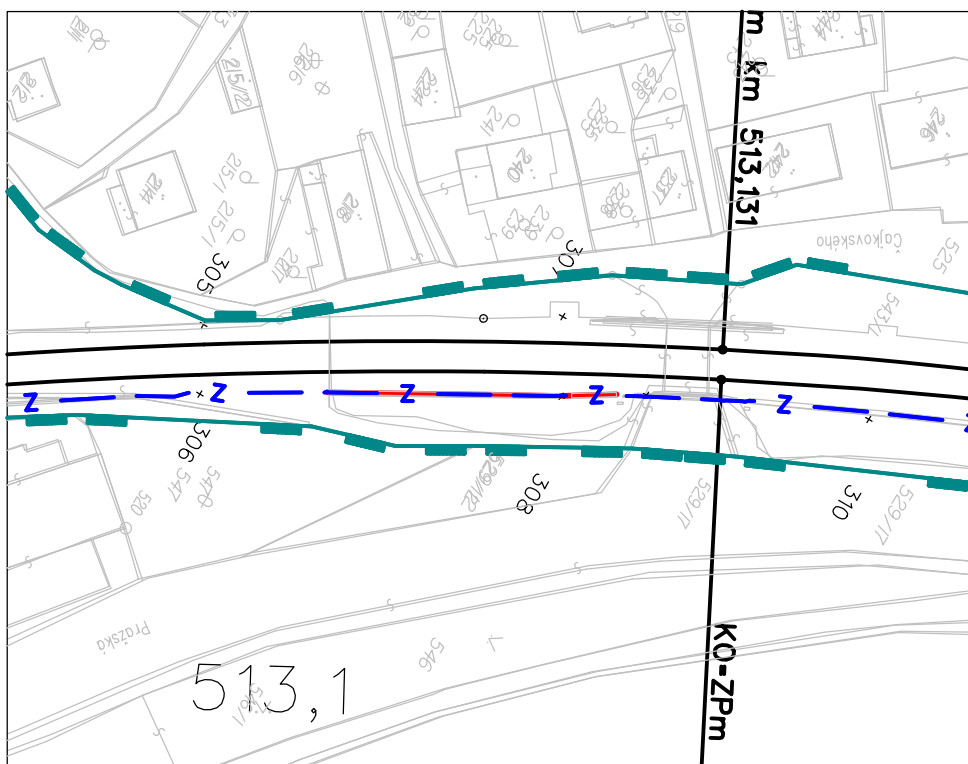


obrázek č.132

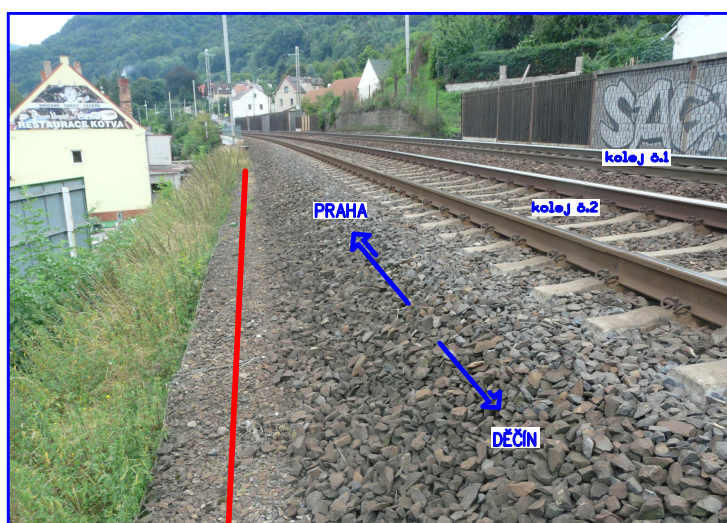
kolej č.2



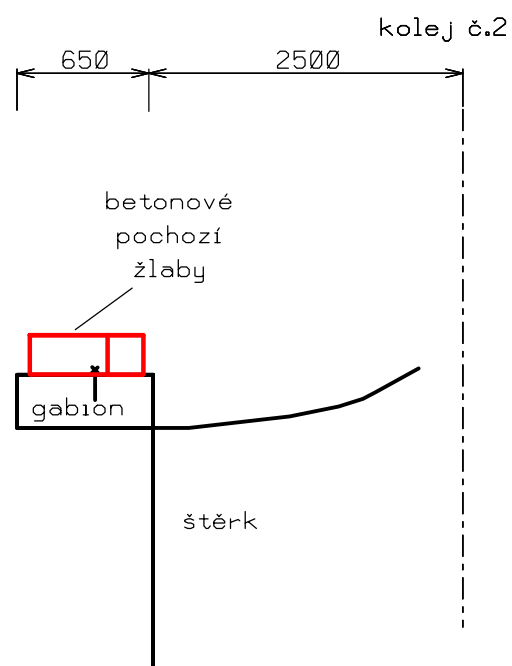
— Navrhovaná kabelová trasa podél zábradlí



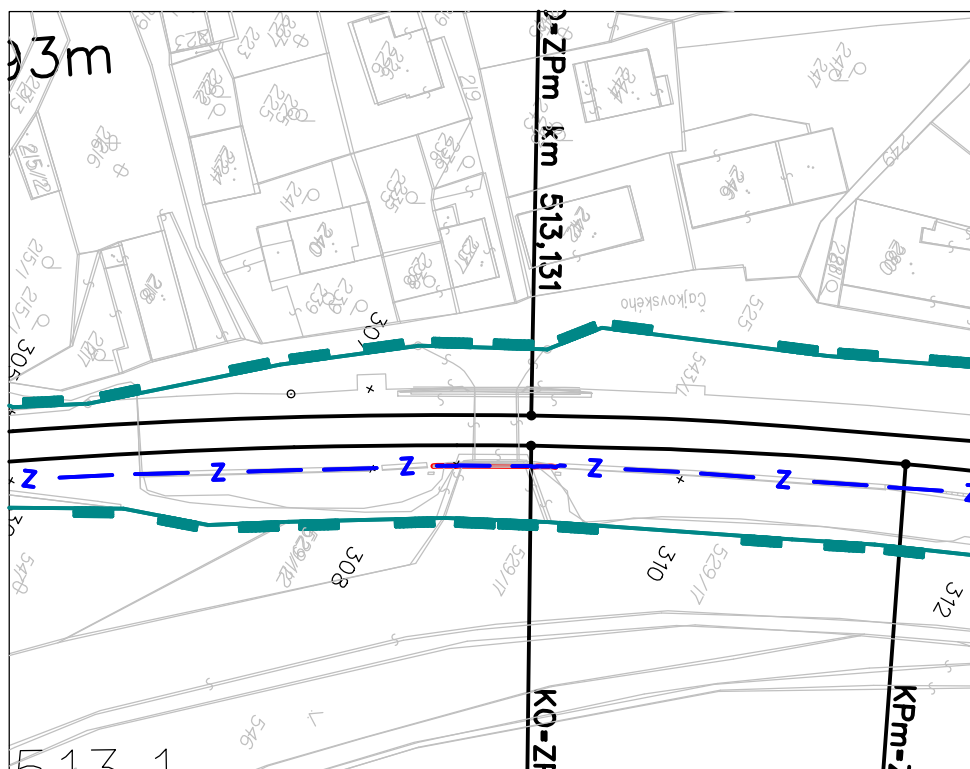
gabion km 513,076 - 513,113



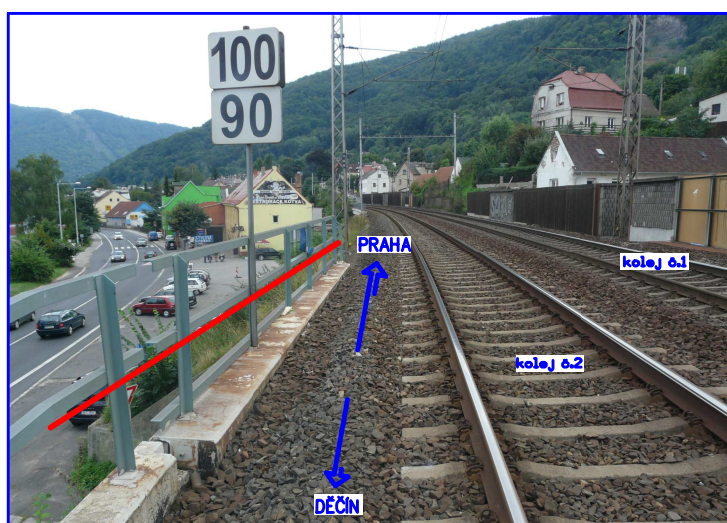
obrázek č.133



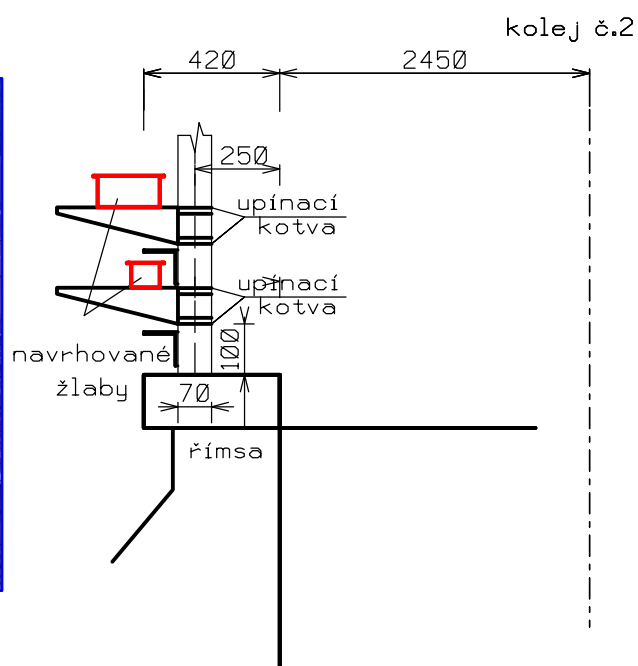
— Navrhovaná kabelová trasa vedena na gabionu



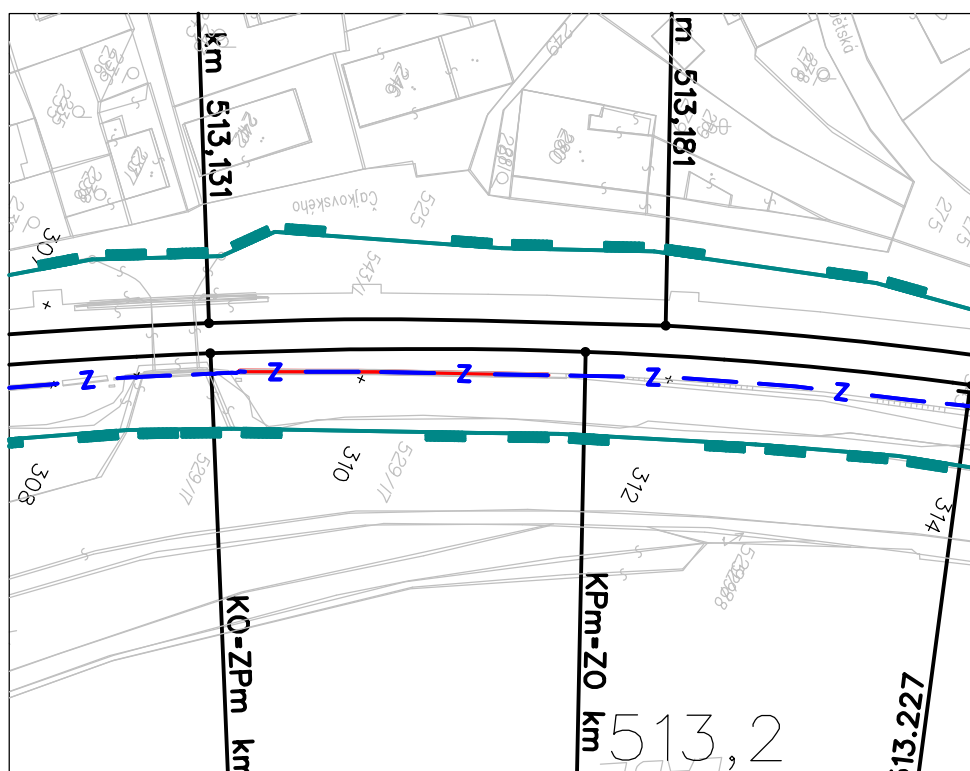
most km 513,117



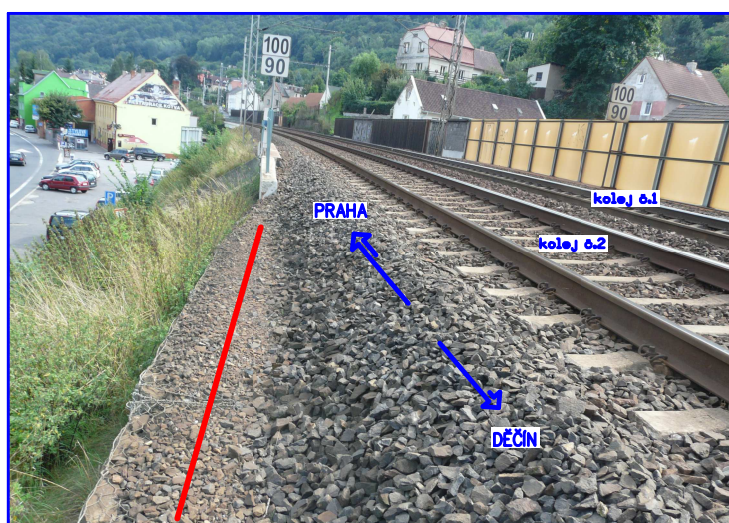
obrázek č.134



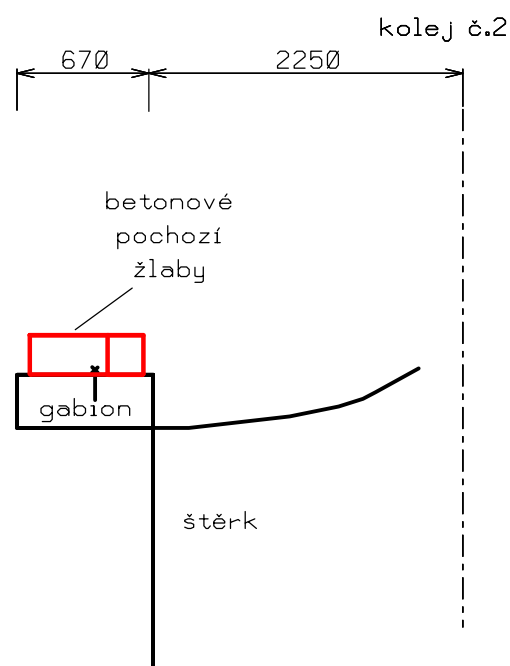
— Navrhovaná kabelová trasa podél zábradlí



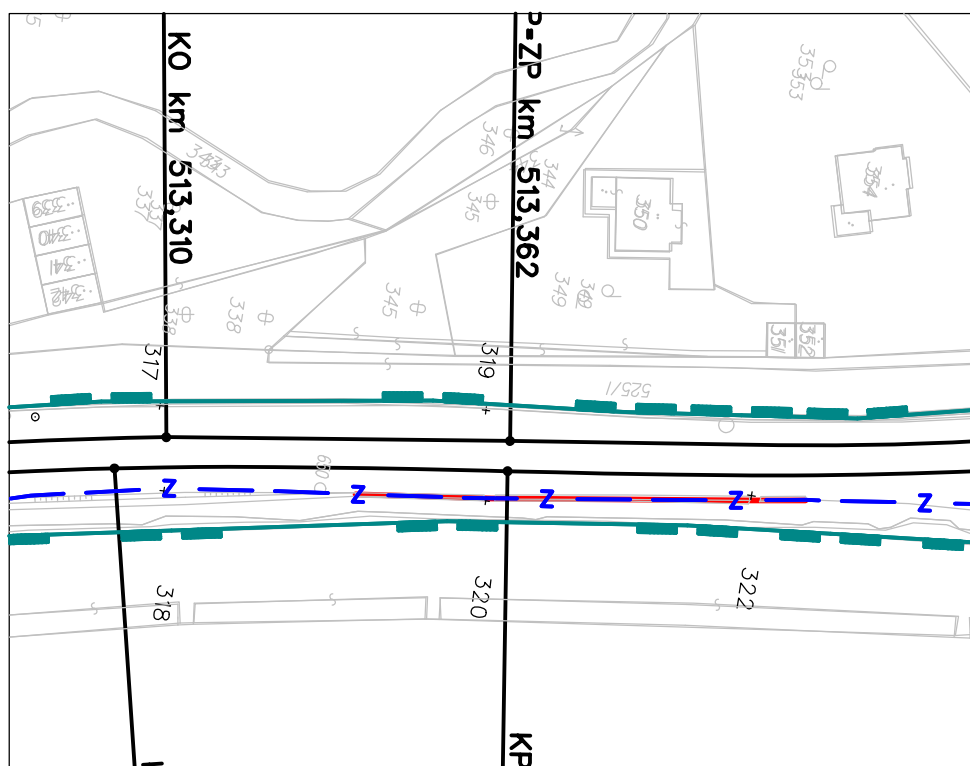
gabion km 513,133 - 513,176



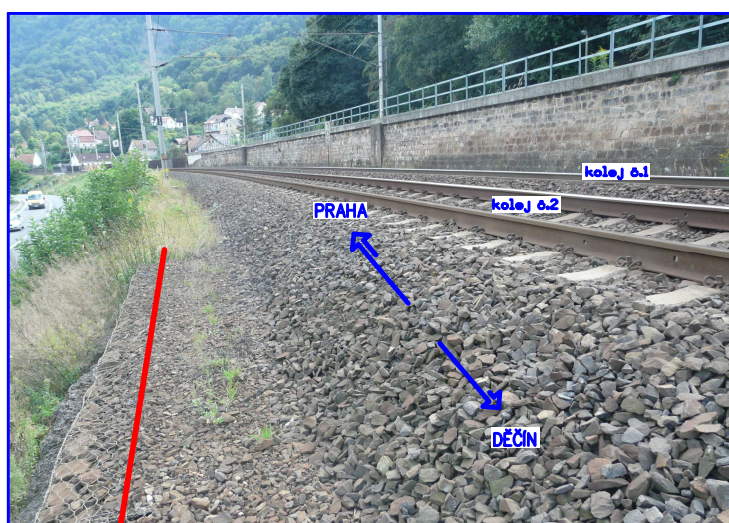
obrázek č.135



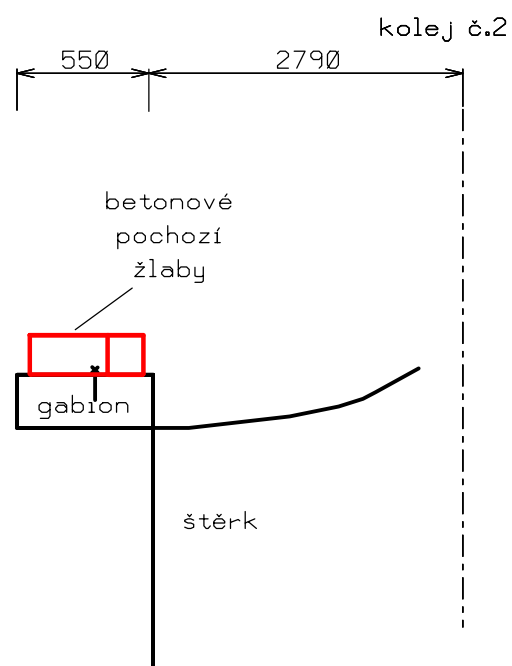
— Navrhovaná kabelová trasa vedena na gabionu



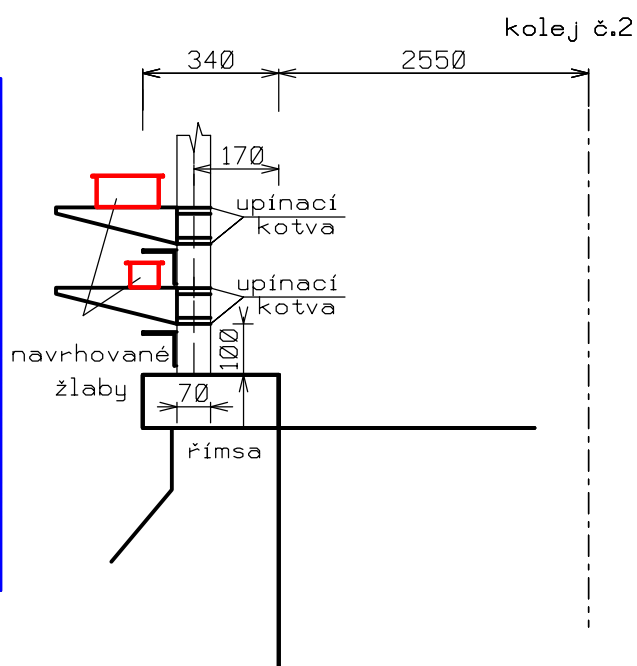
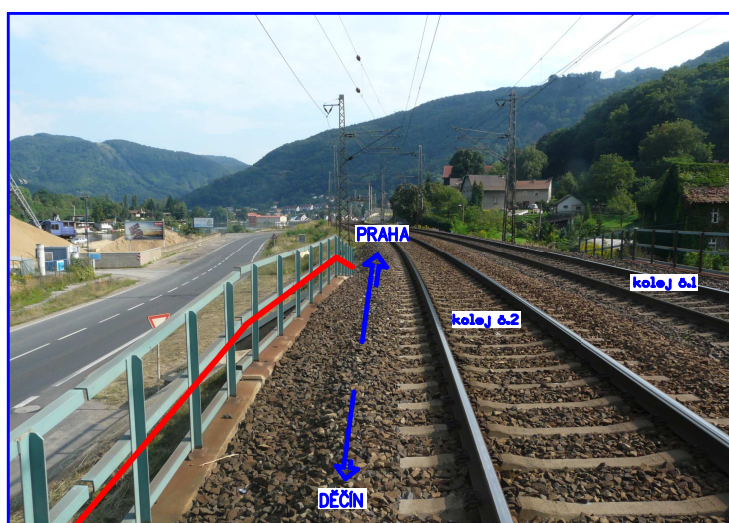
gabion km 513,338 - 513,397



obrázek č.136

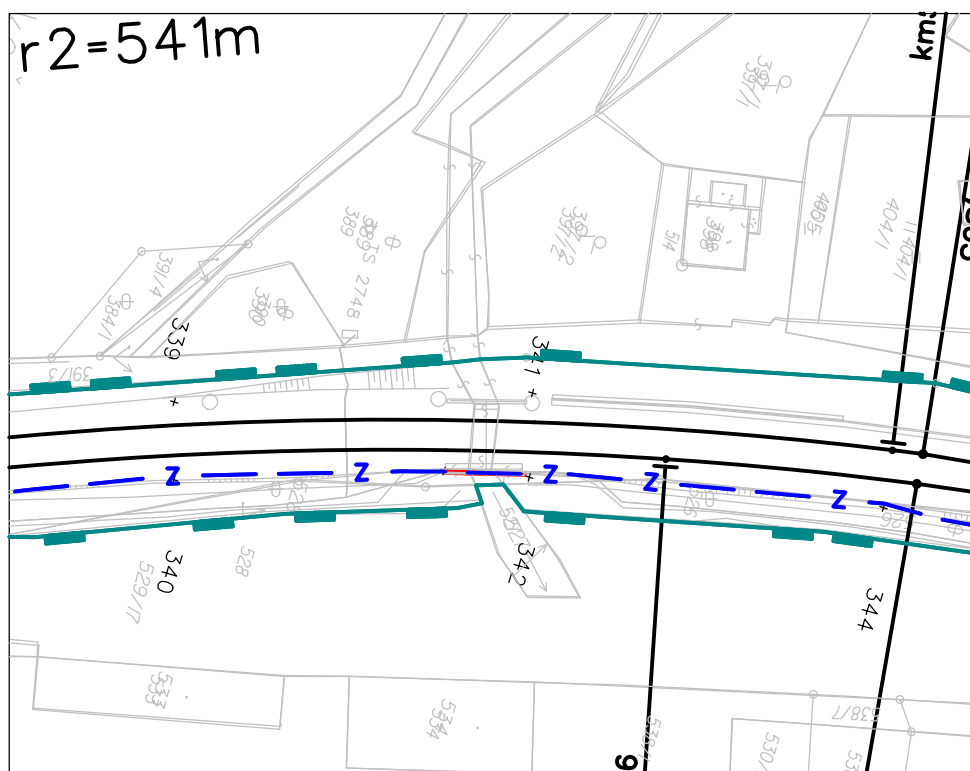


— Navrhovaná kabelová trasa vedena na gabionu

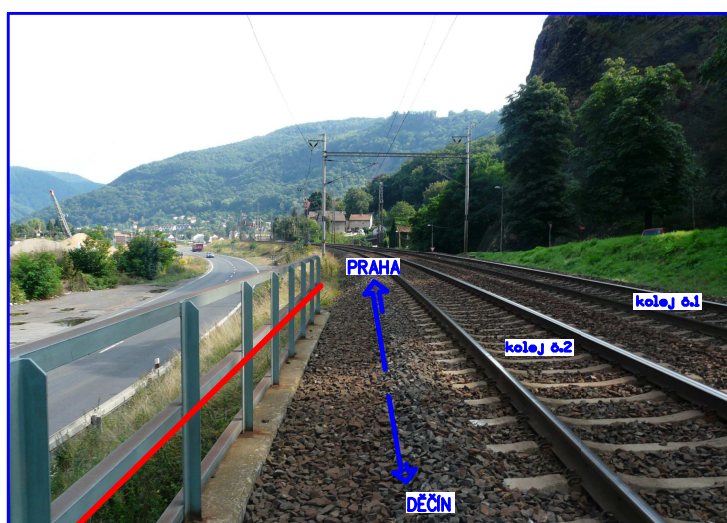


obrázek č.137

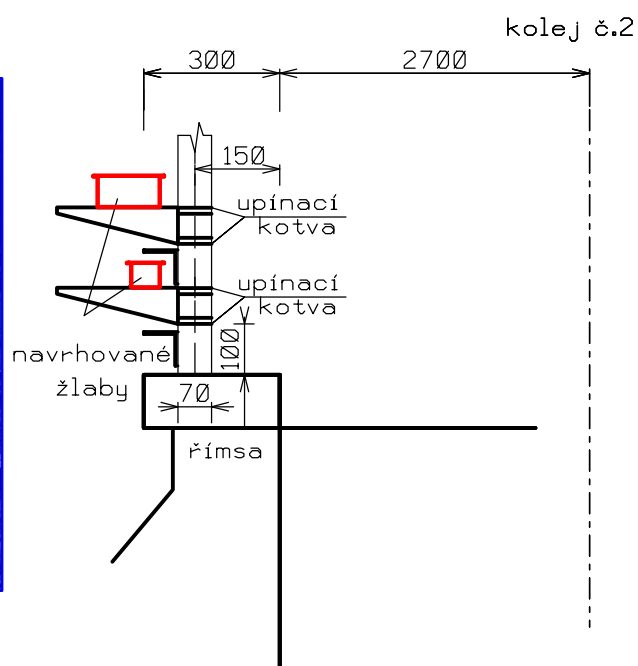
— Navrhovaná kabelová trasa podél zábradlí



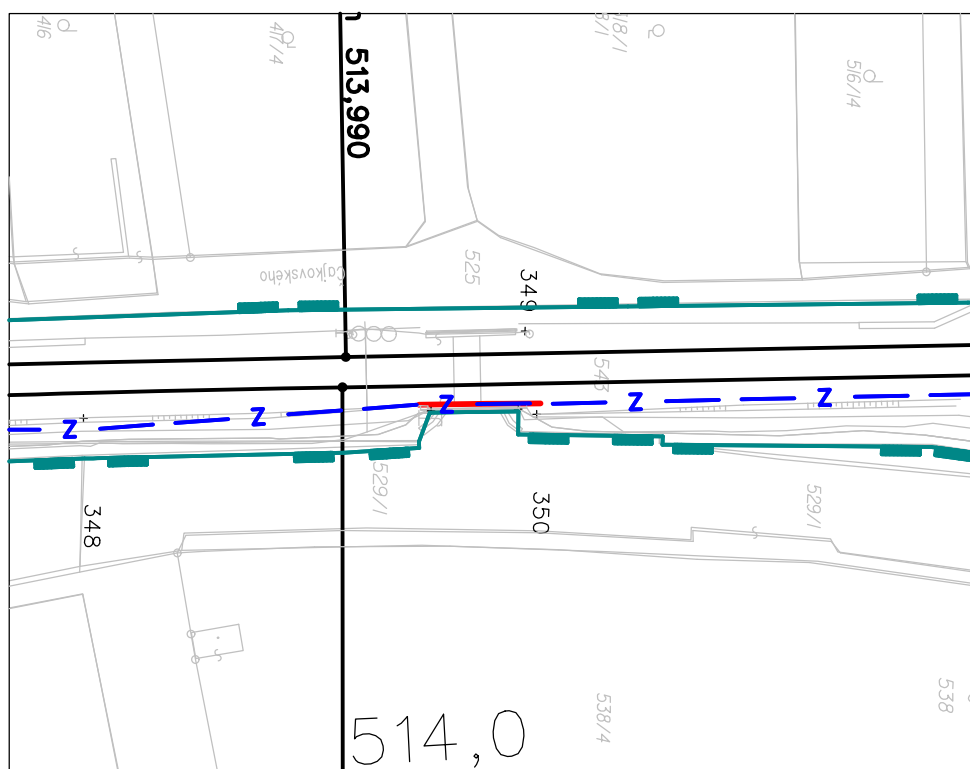
most km 513,796



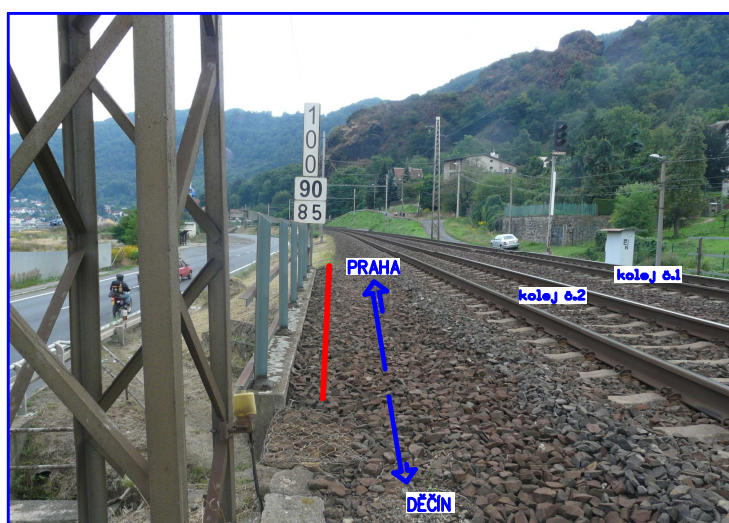
obrázek č.138



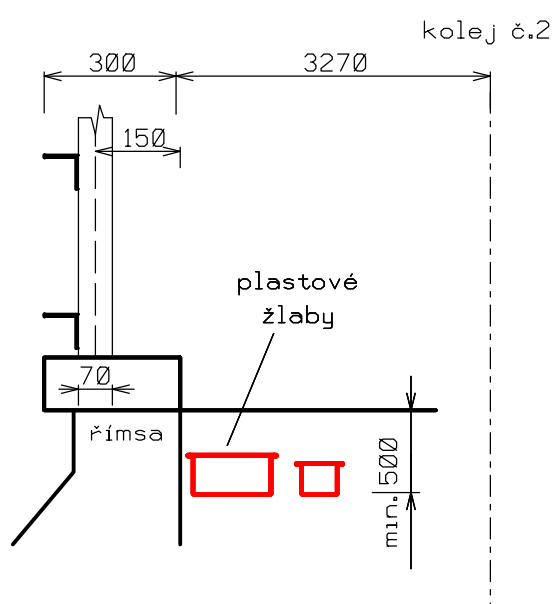
— Navrhovaná kabelová trasa podél zábradlí



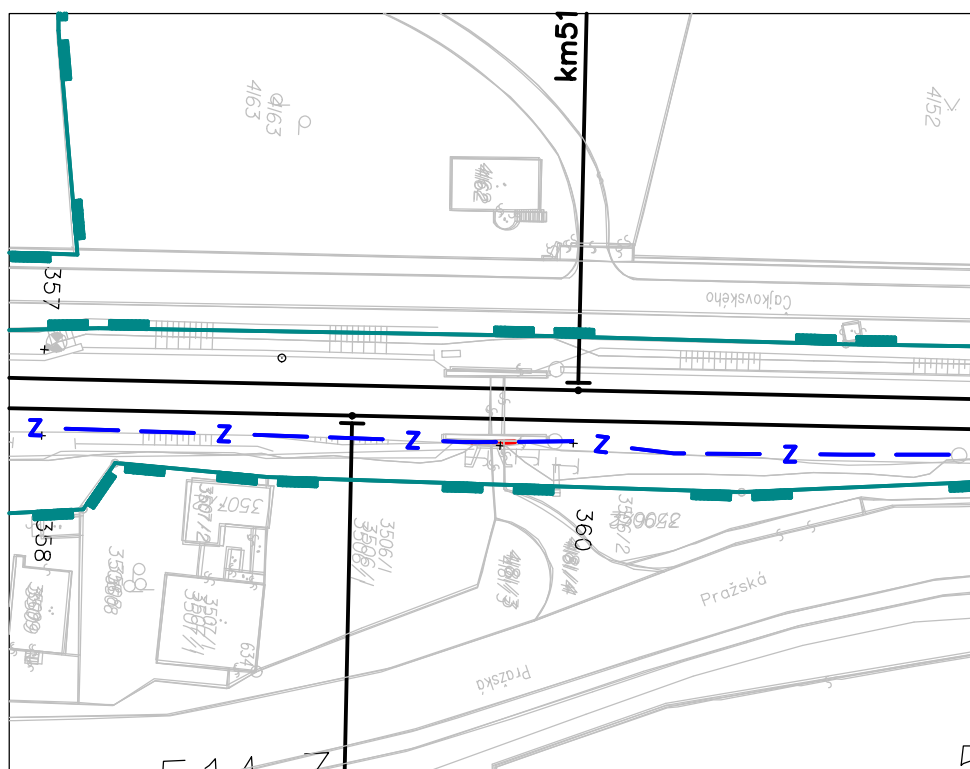
propustek km 513,997



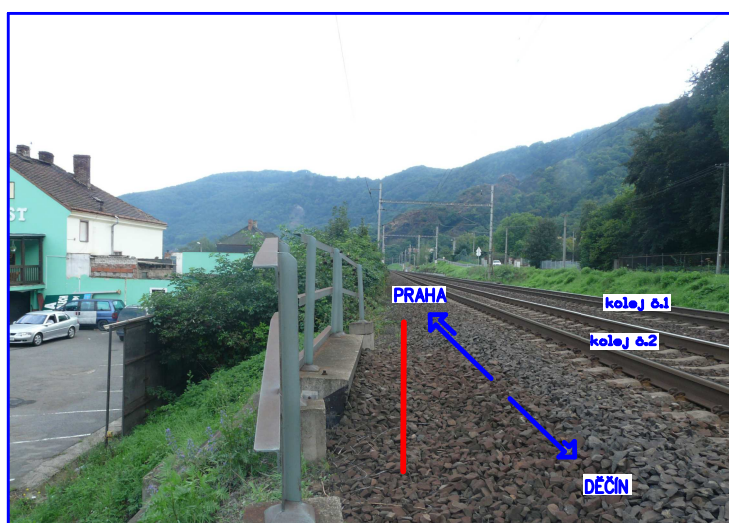
obrázek č.139



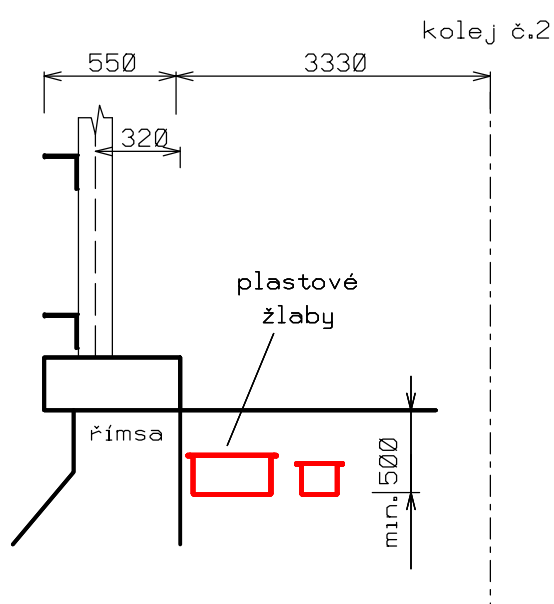
— Navrhovaná kabelová trasa podél římsy propustku



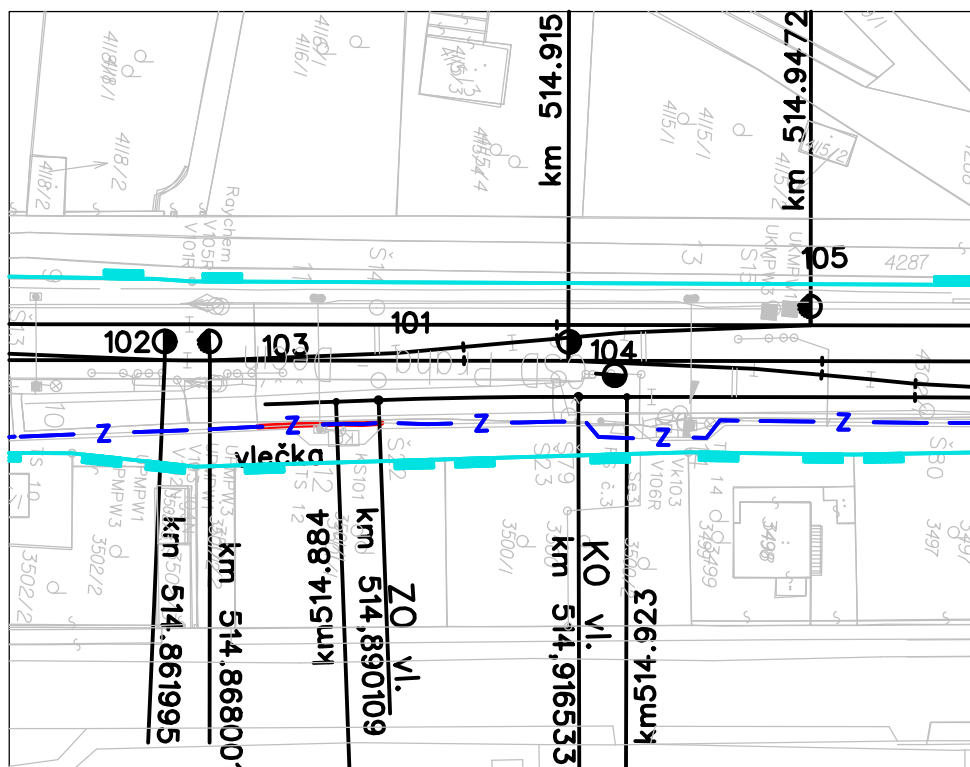
propustek km 513,318



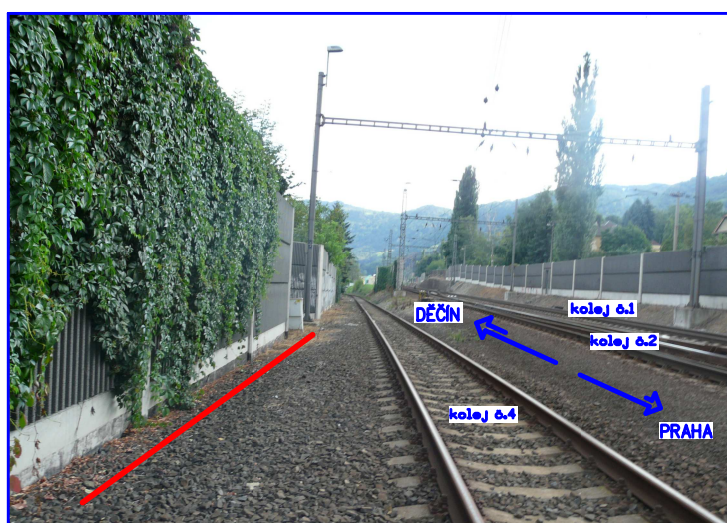
obrázek č.140



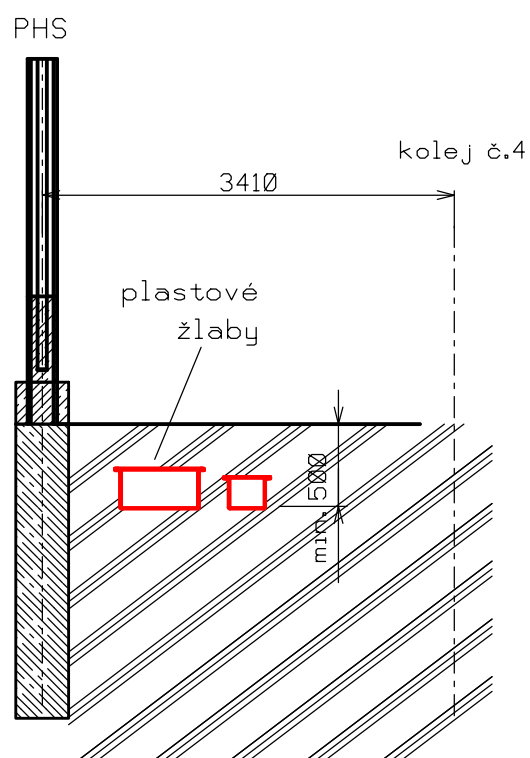
— Navrhovaná kabelová trasa podél řimsy propustku



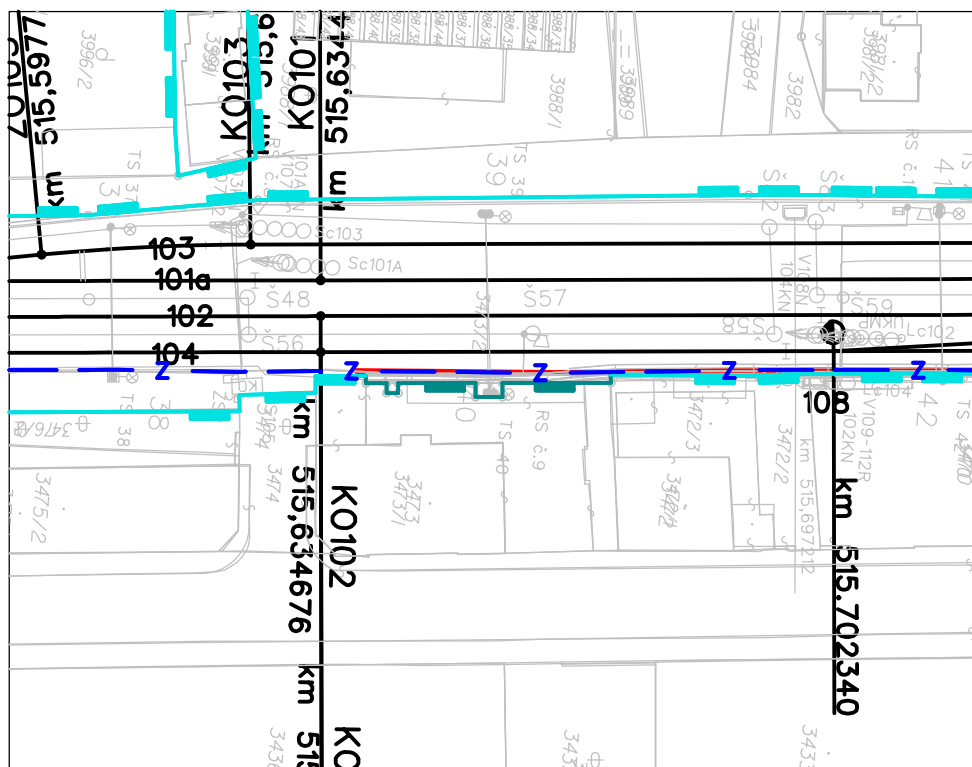
PHS km 514,800



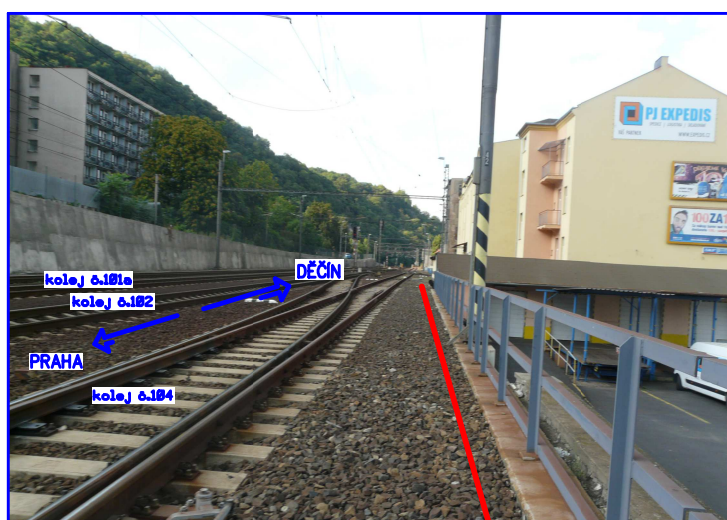
obrázek č.141



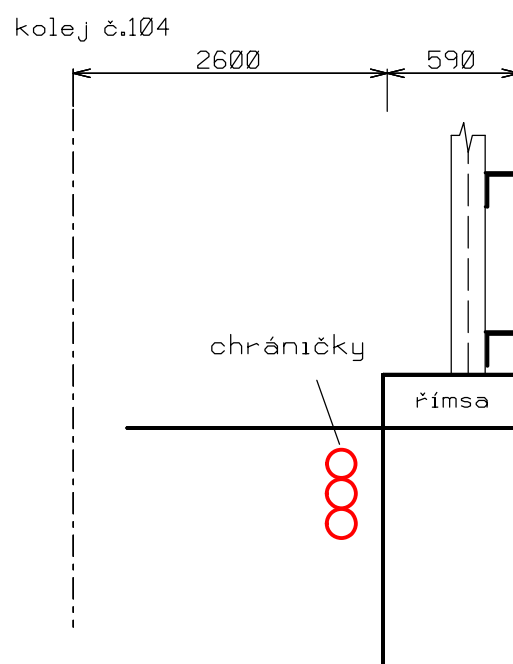
— Navrhovaná kabelová trasa podél PHS



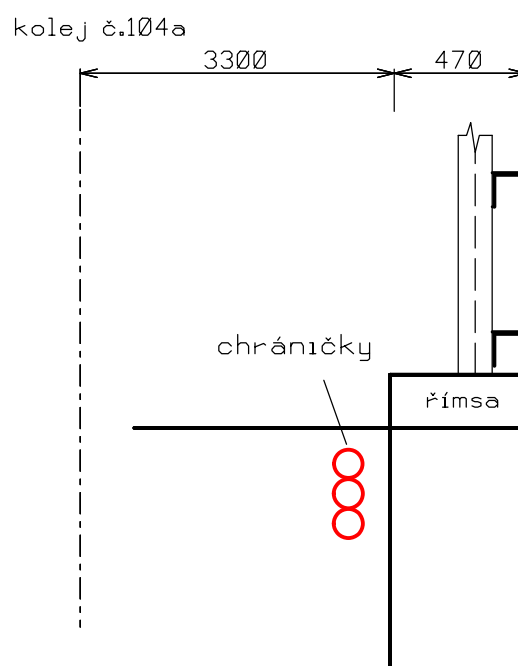
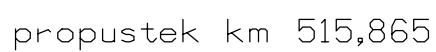
propustek km 515,685



obrázek č.142



— Navrhovaná kabelová trasa podél propustku



— Navrhovaná kabelová trasa podél propustku